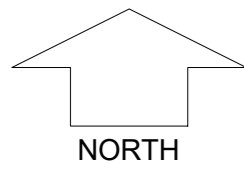




FRASERS LANDING STAGE 8

SCALE 1:500 @ A2



NORTH

MNG Ref: 94036lip-235d Date: 06/05/2024

All dimensions and areas are subject to survey. The particulars on this brochure are supplied for information only and shall not be taken as a representation in any respect on the part of the Vendor or its agent. Authorities should be consulted when services are contained within lot boundaries as building restrictions may apply. All retaining walls and associated easements are shown exaggerated for clarity.

LEGEND

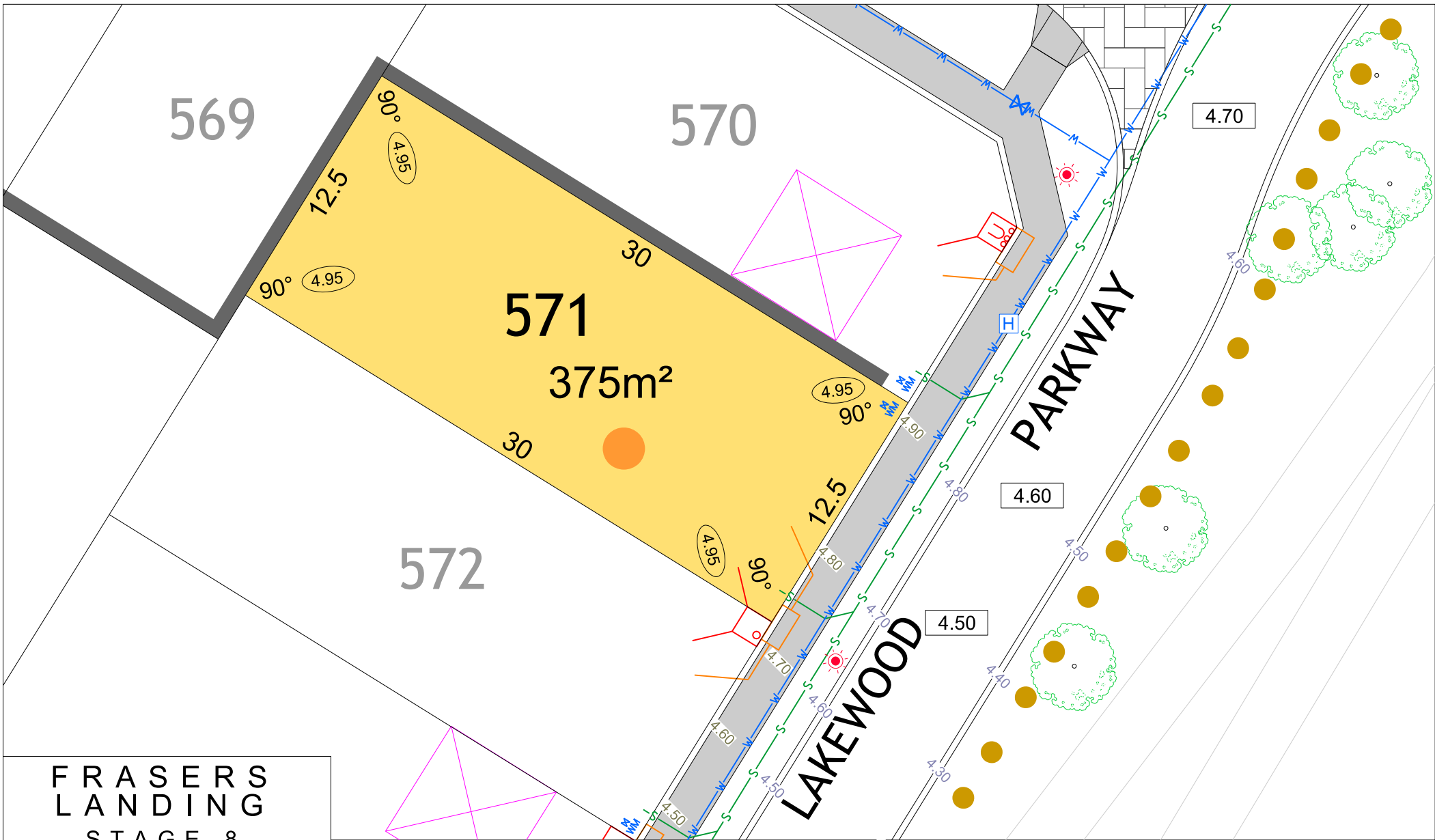
- WATER
- WATER METER
- VALVE / HYDRANT
- SEWER / MANHOLE
- FOOTPATH

- DRAINAGE
- OPTICAL FIBRE COMMUNICATION / PIT
- RETAINING WALL
- GARAGE LOCATION
- PADMOUNT SITE

- POWER DOME - MINI PILLAR
- POWER DOME - UNIVERSAL PILLAR
- STREETLIGHTS
- EXISTING OVERHEAD POWER POLE & STAY WIRE

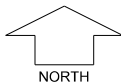
- TOP OF KERB HEIGHT
- SPOT LEVEL
- ROAD LEVEL
- PAD LEVEL
- CROSS OVER

- RETAINED TREE
- RESIDENTIAL DENSITY
 - R30
 - R40
 - R50
- INDICATIVE BUSHFIRE ATTACK LEVELS (BAL-)
 - 12.5
 - 29



FRASERS LANDING STAGE 8

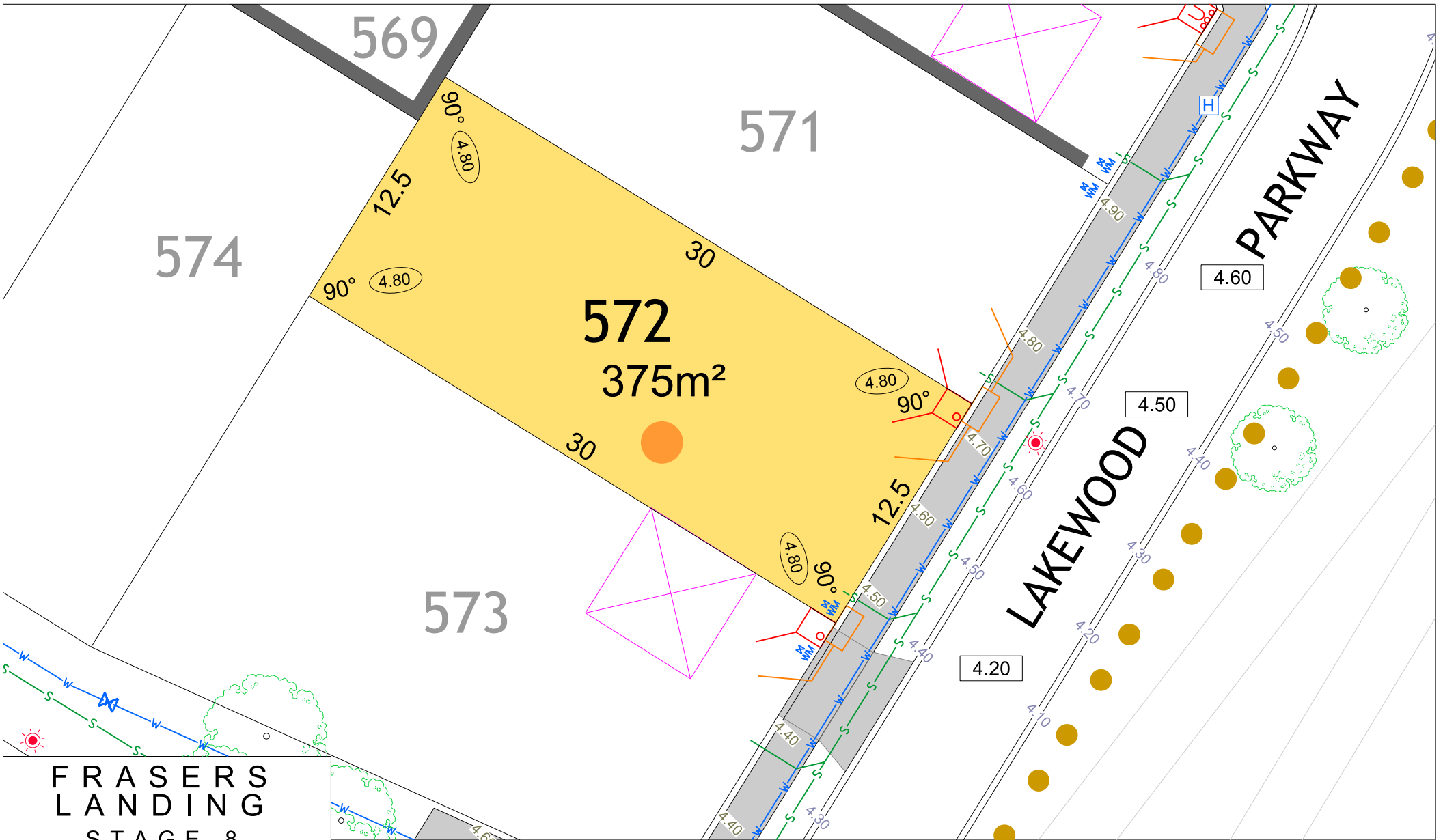
SCALE 1:250



MNG. Ref: 94036lip-235d Date: 06/05/2024
 All dimensions and areas are subject to survey. The particulars on this brochure are supplied for Information only and shall not be taken as a representation in any respect on the part of the Vendor or its agent. Authorities should be consulted when services are contained within lot boundaries as building restrictions may apply. All retaining walls and associated easements are shown exaggerated for clarity.

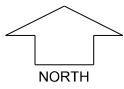
LEGEND

	WATER		DRAINAGE		POWER DOME - MINI PILLAR		TOP OF KERB HEIGHT		RETAINED TREE
	WATER METER		OPTICAL FIBRE COMMUNICATION / PIT		POWER DOME - UNIVERSAL PILLAR		SPOT LEVEL		RESIDENTIAL DENSITY R30 R40 R50
	VALVE / HYDRANT		RETAINING WALL		STREETLIGHTS		ROAD LEVEL		INDICATIVE BUSHFIRE ATTACK LEVELS (BAL-) 12.5 29
	SEWER / MANHOLE		GARAGE LOCATION		EXISTING OVERHEAD POWER POLE & STAY WIRE		PAD LEVEL		
	FOOTPATH		PADMOUNT SITE		CROSS OVER				



**FRASERS
LANDING
STAGE 8**

SCALE 1:250



NORTH

MNG. Ref: 94036lip-235d Date: 06/05/2024

All dimensions and areas are subject to survey. The particulars on this brochure are supplied for Information only and shall not be taken as a representation in any respect on the part of the Vendor or its agent. Authorities should be consulted when services are contained within lot boundaries as building restrictions may apply. All retaining walls and associated easements are shown exaggerated for clarity.

LEGEND

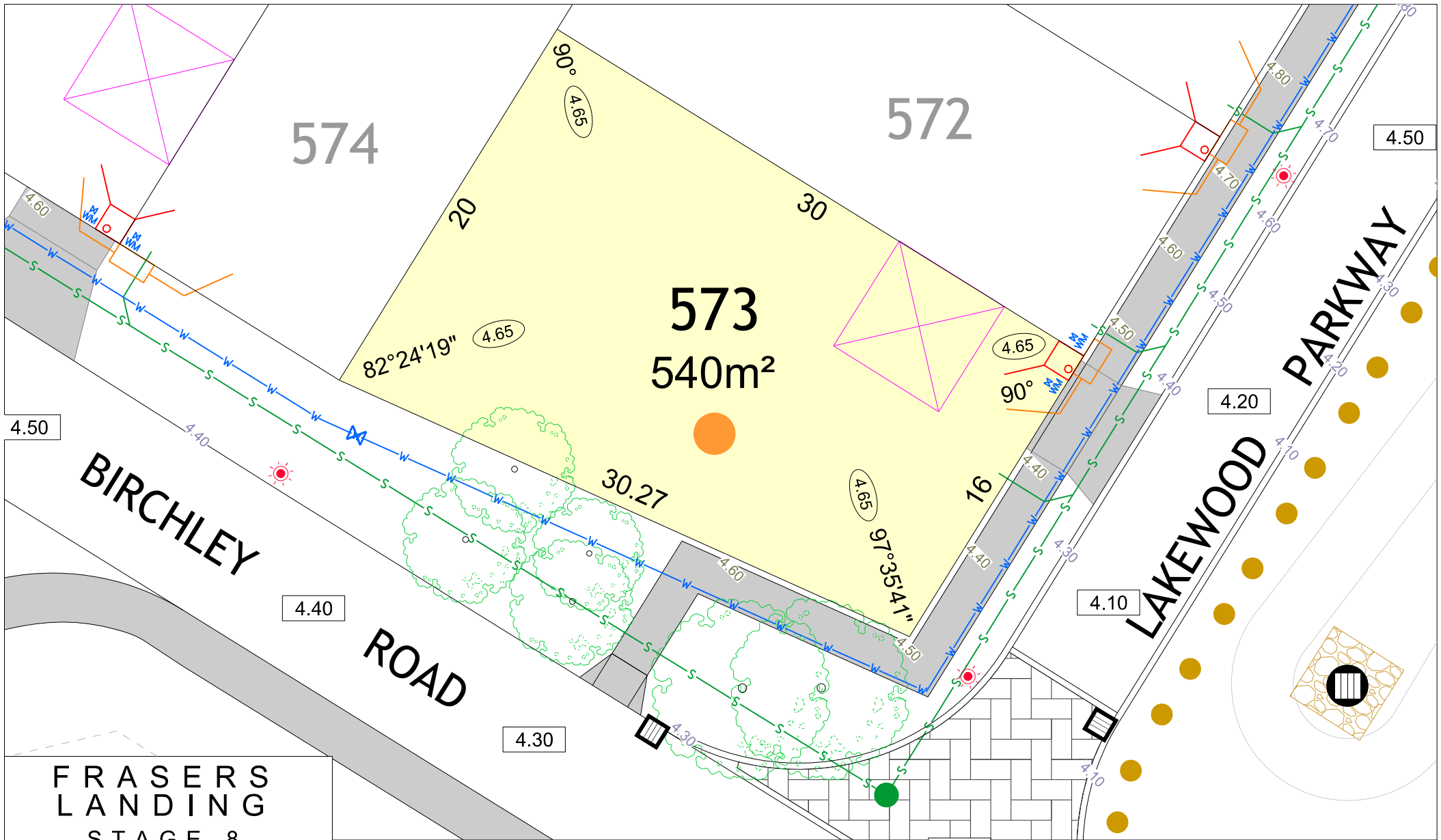
- WATER
- WATER METER
- VALVE / HYDRANT
- SEWER / MANHOLE
- FOOTPATH

- DRAINAGE
- OPTICAL FIBRE COMMUNICATION / PIT
- RETAINING WALL
- GARAGE LOCATION
- PADMOUNT SITE

- POWER DOME - MINI PILLAR
- POWER DOME - UNIVERSAL PILLAR
- STREETLIGHTS
- EXISTING OVERHEAD POWER POLE & STAY WIRE

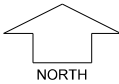
- TOP OF KERB HEIGHT
- SPOT LEVEL
- ROAD LEVEL
- PAD LEVEL
- CROSS OVER

- RETAINED TREE
- RESIDENTIAL DENSITY
R30 R40 R50
- INDICATIVE BUSHFIRE ATTACK LEVELS (BAL-)
12.5 29



FRASERS LANDING STAGE 8

SCALE 1:250



MNG. Ref: 94036lp-235d Date: 06/05/2024
 All dimensions and areas are subject to survey. The particulars on this brochure are supplied for Information only and shall not be taken as a representation in any respect on the part of the Vendor or its agent. Authorities should be consulted when services are contained within lot boundaries as building restrictions may apply. All retaining walls and associated easements are shown exaggerated for clarity.

LEGEND

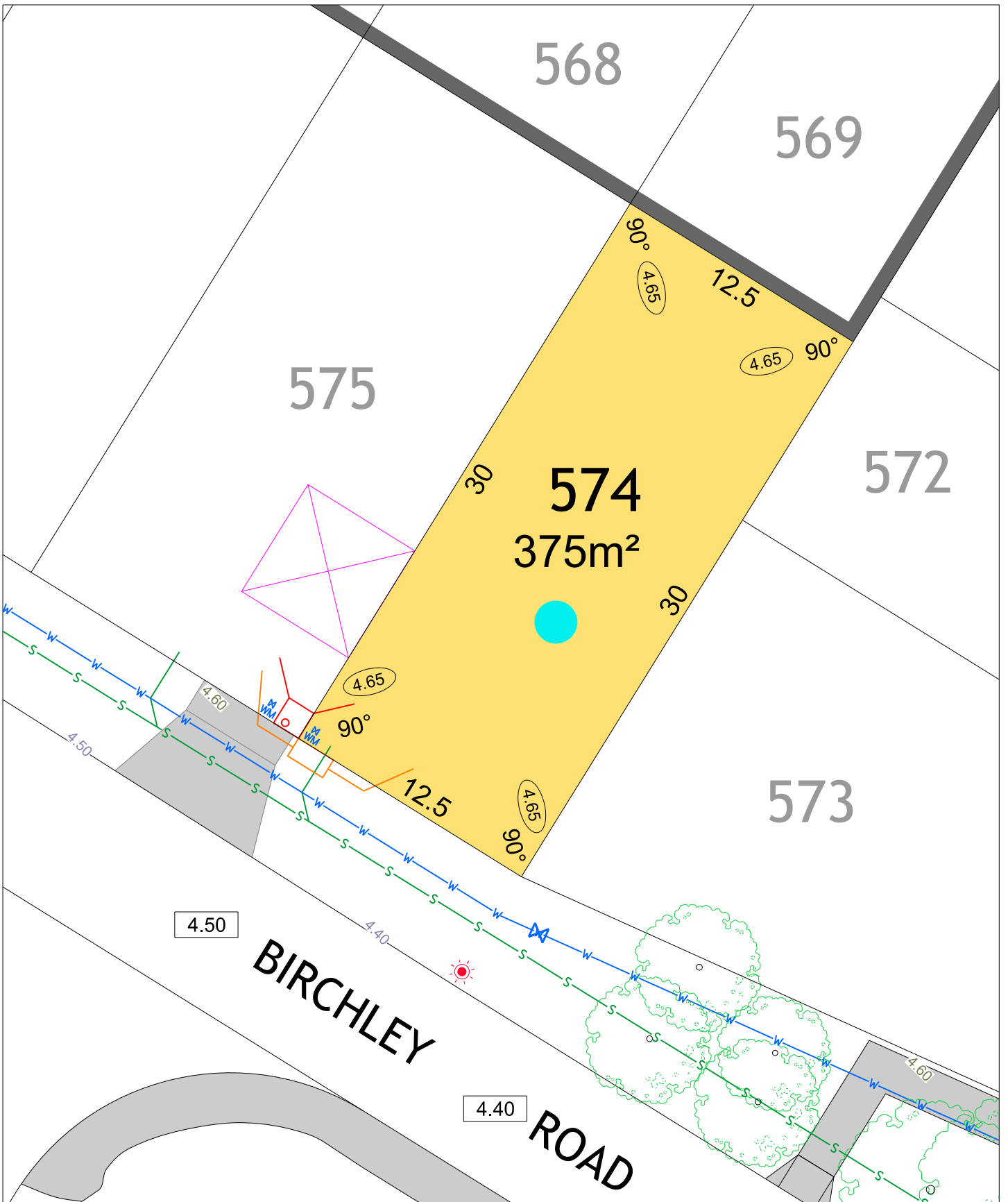
- WATER
- WATER METER
- VALVE / HYDRANT
- SEWER / MANHOLE
- FOOTPATH

- DRAINAGE
- OPTICAL FIBRE COMMUNICATION / PIT
- RETAINING WALL
- GARAGE LOCATION
- PADMOUNT SITE

- POWER DOME - MINI PILLAR
- POWER DOME - UNIVERSAL PILLAR
- STREETLIGHTS
- EXISTING OVERHEAD POWER POLE & STAY WIRE

- TOP OF KERB HEIGHT
- SPOT LEVEL
- ROAD LEVEL
- PAD LEVEL
- CROSS OVER

- RETAINED TREE
- RESIDENTIAL DENSITY
 R30
 R40
 R50
- INDICATIVE BUSHFIRE ATTACK LEVELS (BAL-)
 12.5
 29



FRASERS LANDING STAGE 8



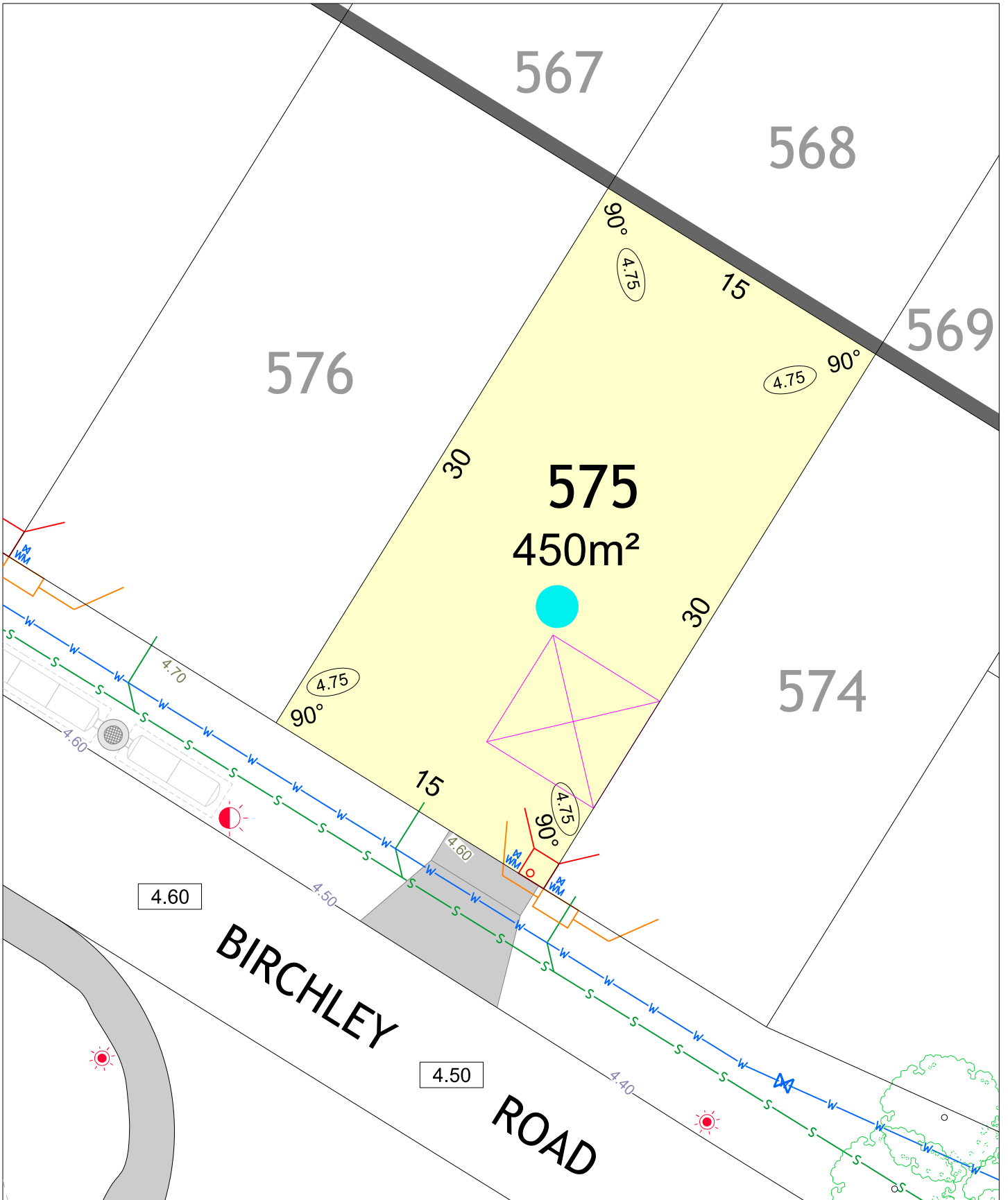
SCALE 1:250

MNG. Ref: 94036lip-235d Date: 06/05/2024

All dimensions and areas are subject to survey. The particulars on this brochure are supplied for information only and shall not be taken as a representation in any respect on the part of the Vendor or its agent. Authorities should be consulted when services are contained within lot boundaries as building restrictions may apply. All retaining walls and associated easements are shown exaggerated for clarity.

LEGEND

	WATER		POWER DOME - MINI PILLAR		TOP OF KERB HEIGHT
	WATER METER		POWER DOME - UNIVERSAL PILLAR		SPOT LEVEL
	VALVE / HYDRANT		STREETLIGHTS		PAD LEVEL
	DRAINAGE		EXISTING OVERHEAD POWER POLE & STAY WIRE		ROAD LEVEL
	SEWER / MANHOLE		PADMOUNT SITE		CROSS OVER (BY OWNER)
	FOOTPATH		OPTICAL FIBRE COMMUNICATION / PIT	RESIDENTIAL DENSITY	
	GARAGE LOCATION		RETAINING WALL		R30
	RETAINED TREES				R40
					R50
				INDICATIVE BUSHFIRE ATTACK LEVELS (BAL-)	
					12.5
					29



FRASERS LANDING STAGE 8



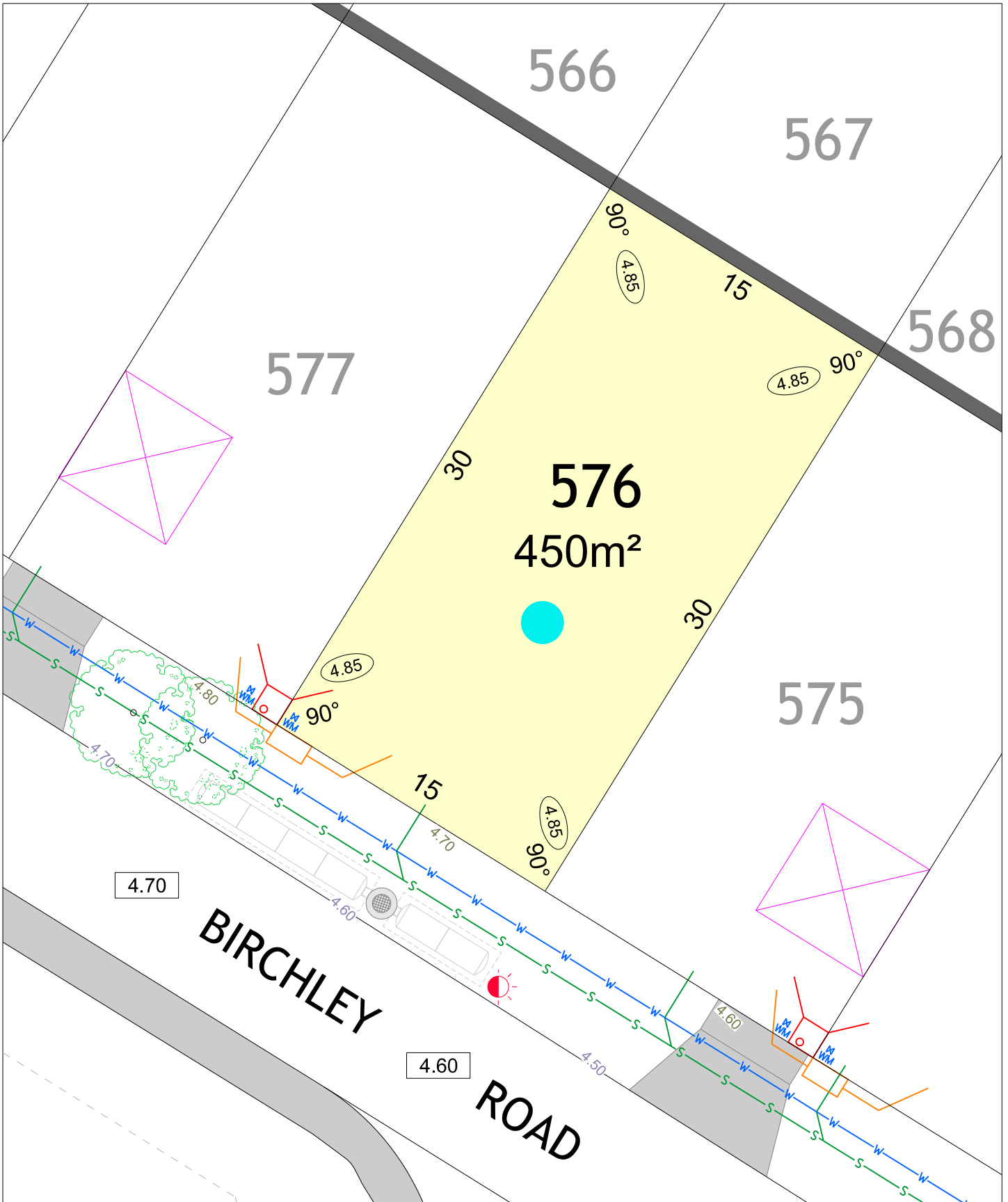
SCALE 1:250

MNG. Ref: 94036lip-235d Date: 06/05/2024

All dimensions and areas are subject to survey. The particulars on this brochure are supplied for information only and shall not be taken as a representation in any respect on the part of the Vendor or its agent. Authorities should be consulted when services are contained within lot boundaries as building restrictions may apply. All retaining walls and associated easements are shown exaggerated for clarity.

LEGEND

	WATER		POWER DOME - MINI PILLAR		TOP OF KERB HEIGHT
	WATER METER		POWER DOME - UNIVERSAL PILLAR		SPOT LEVEL
	VALVE / HYDRANT		STREETLIGHTS		PAD LEVEL
	DRAINAGE		EXISTING OVERHEAD POWER POLE & STAY WIRE		ROAD LEVEL
	SEWER / MANHOLE		PADMOUNT SITE		CROSS OVER (BY OWNER)
	FOOTPATH		OPTICAL FIBRE COMMUNICATION / PIT		RESIDENTIAL DENSITY R30
	GARAGE LOCATION		RETAINING WALL		RESIDENTIAL DENSITY R40
	RETAINED TREES				RESIDENTIAL DENSITY R50
					INDICATIVE BUSHFIRE ATTACK LEVELS (BAL-) 12.5
					INDICATIVE BUSHFIRE ATTACK LEVELS (BAL-) 29



FRASERS LANDING STAGE 8



SCALE 1:250

MNG Ref: 94036lip-235d Date: 06/05/2024

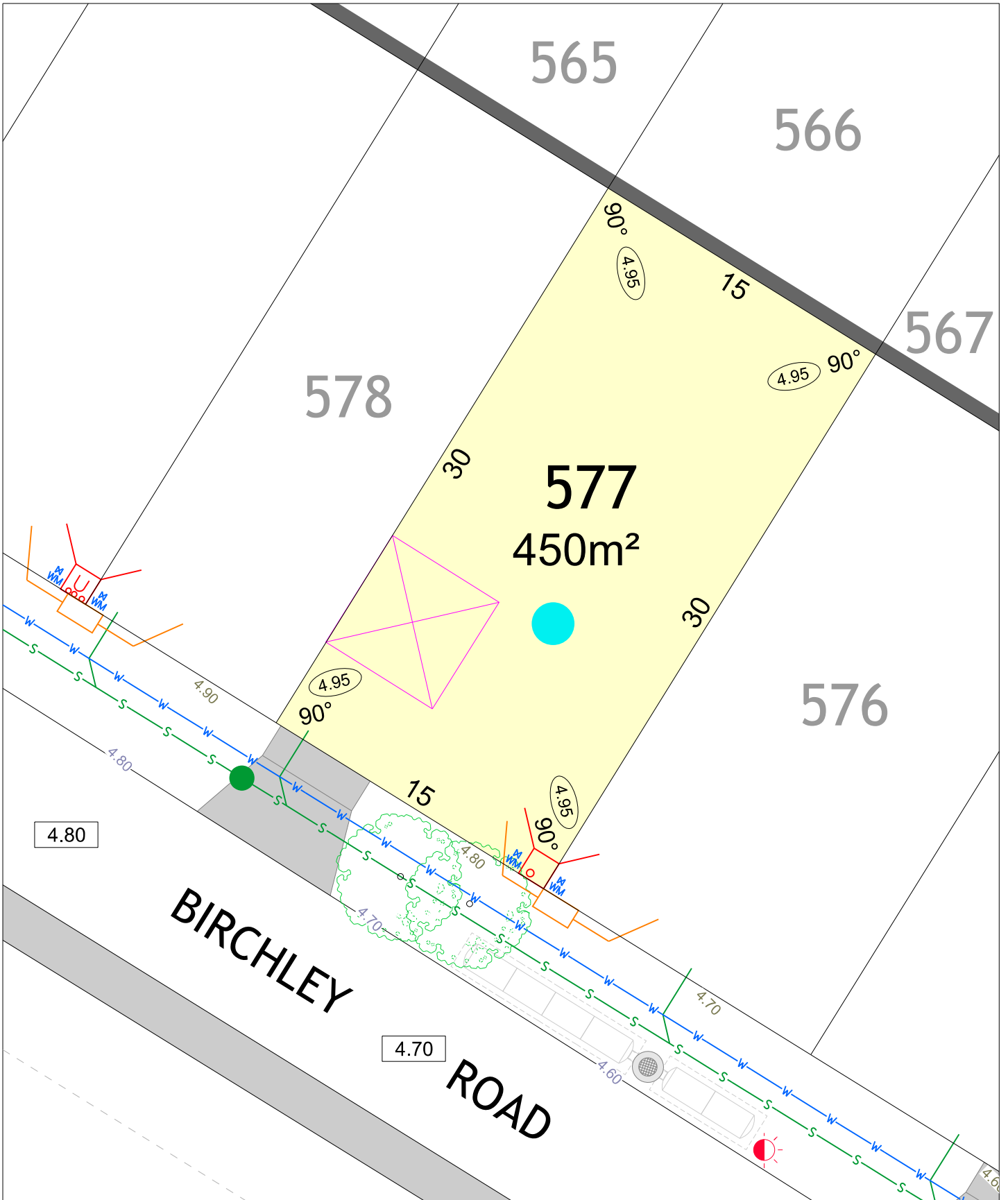
All dimensions and areas are subject to survey. The particulars on this brochure are supplied for information only and shall not be taken as a representation in any respect on the part of the Vendor or its agent. Authorities should be consulted when services are contained within lot boundaries as building restrictions may apply. All retaining walls and associated easements are shown exaggerated for clarity.

LEGEND

- WATER
- WATER METER
- VALVE / HYDRANT
- DRAINAGE
- SEWER / MANHOLE
- FOOTPATH
- GARAGE LOCATION
- RETAINED TREES

- POWER DOME - MINI PILLAR
- POWER DOME - UNIVERSAL PILLAR
- STREETLIGHTS
- EXISTING OVERHEAD POWER POLE & STAY WIRE
- PADMOUNT SITE
- OPTICAL FIBRE COMMUNICATION / PIT
- RETAINING WALL

- TOP OF KERB HEIGHT
- SPOT LEVEL
- PAD LEVEL
- ROAD LEVEL
- CROSS OVER (BY OWNER)
- RESIDENTIAL DENSITY**
- R30
- R40
- R50
- INDICATIVE BUSHFIRE ATTACK LEVELS (BAL-)**
- 12.5
- 29



FRASERS LANDING STAGE 8



SCALE 1:250

MNG. Ref: 94036lip-235d Date: 06/05/2024

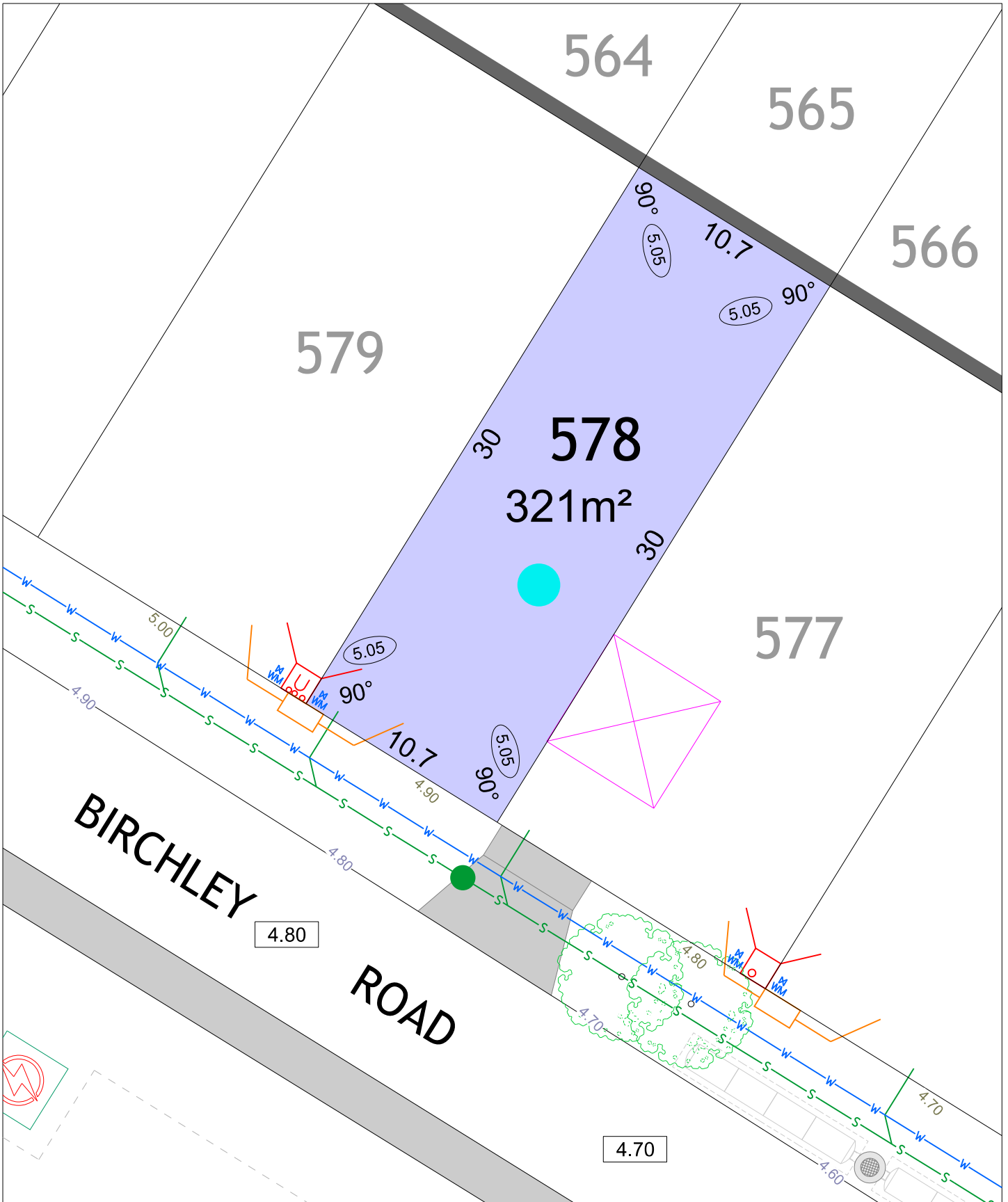
All dimensions and areas are subject to survey. The particulars on this brochure are supplied for information only and shall not be taken as a representation in any respect on the part of the Vendor or its agent. Authorities should be consulted when services are contained within lot boundaries as building restrictions may apply. All retaining walls and associated easements are shown exaggerated for clarity.

LEGEND

- WATER
- WATER METER
- VALVE / HYDRANT
- DRAINAGE
- SEWER / MANHOLE
- FOOTPATH
- GARAGE LOCATION
- RETAINED TREES

- POWER DOME - UNIVERSAL PILLAR
- POWER DOME - MINI PILLAR
- STREETLIGHTS
- EXISTING OVERHEAD POWER POLE & STAY WIRE
- PADMOUNT SITE
- OPTICAL FIBRE COMMUNICATION / PIT
- RETAINING WALL

- TOP OF KERB HEIGHT
- SPOT LEVEL
- PAD LEVEL
- ROAD LEVEL
- CROSS OVER (BY OWNER)
- RESIDENTIAL DENSITY**
- R30
- R40
- R50
- INDICATIVE BUSHFIRE ATTACK LEVELS (BAL-)**
- 12.5
- 29



FRASERS LANDING STAGE 8



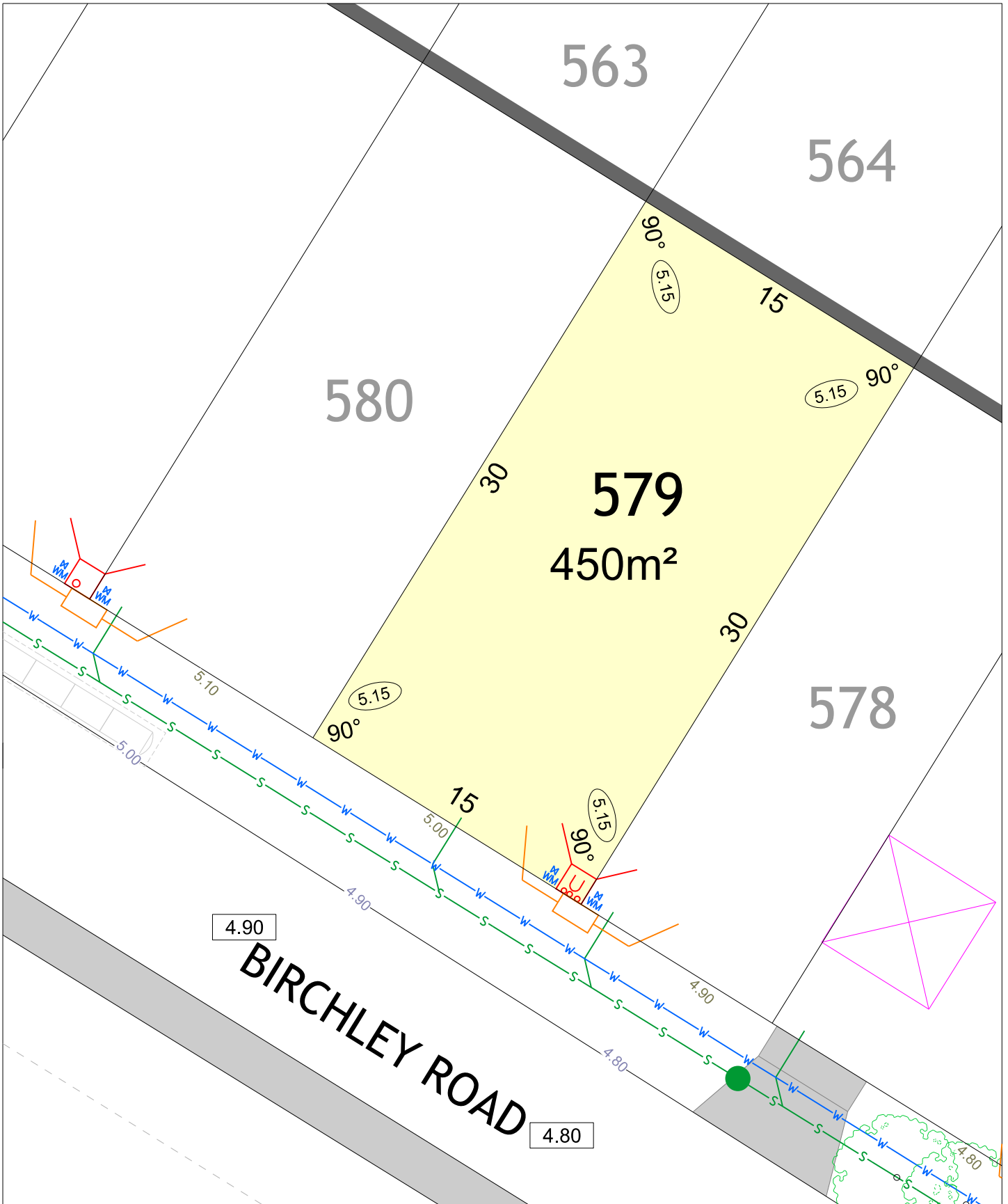
SCALE 1:250

MNG Ref: 94036lip-235d Date: 06/05/2024

All dimensions and areas are subject to survey. The particulars on this brochure are supplied for information only and shall not be taken as a representation in any respect on the part of the Vendor or its agent. Authorities should be consulted when services are contained within lot boundaries as building restrictions may apply. All retaining walls and associated easements are shown exaggerated for clarity.

LEGEND

	WATER		POWER DOME - UNIVERSAL PILLAR		TOP OF KERB HEIGHT
	WATER METER		POWER DOME - MINI PILLAR		SPOT LEVEL
	VALVE / HYDRANT		STREETLIGHTS		PAD LEVEL
	DRAINAGE		EXISTING OVERHEAD POWER POLE & STAY WIRE		ROAD LEVEL
	SEWER / MANHOLE		PADMOUNT SITE		CROSS OVER (BY OWNER)
	FOOTPATH		OPTICAL FIBRE COMMUNICATION / PIT		RESIDENTIAL DENSITY R30
	GARAGE LOCATION		RETAINING WALL		RESIDENTIAL DENSITY R40
	RETAINED TREES				RESIDENTIAL DENSITY R50
					INDICATIVE BUSHFIRE ATTACK LEVELS (BAL-) 12.5
					INDICATIVE BUSHFIRE ATTACK LEVELS (BAL-) 29



FRASERS LANDING STAGE 8



SCALE 1:250

MNG Ref: 94036lip-235d Date: 06/05/2024

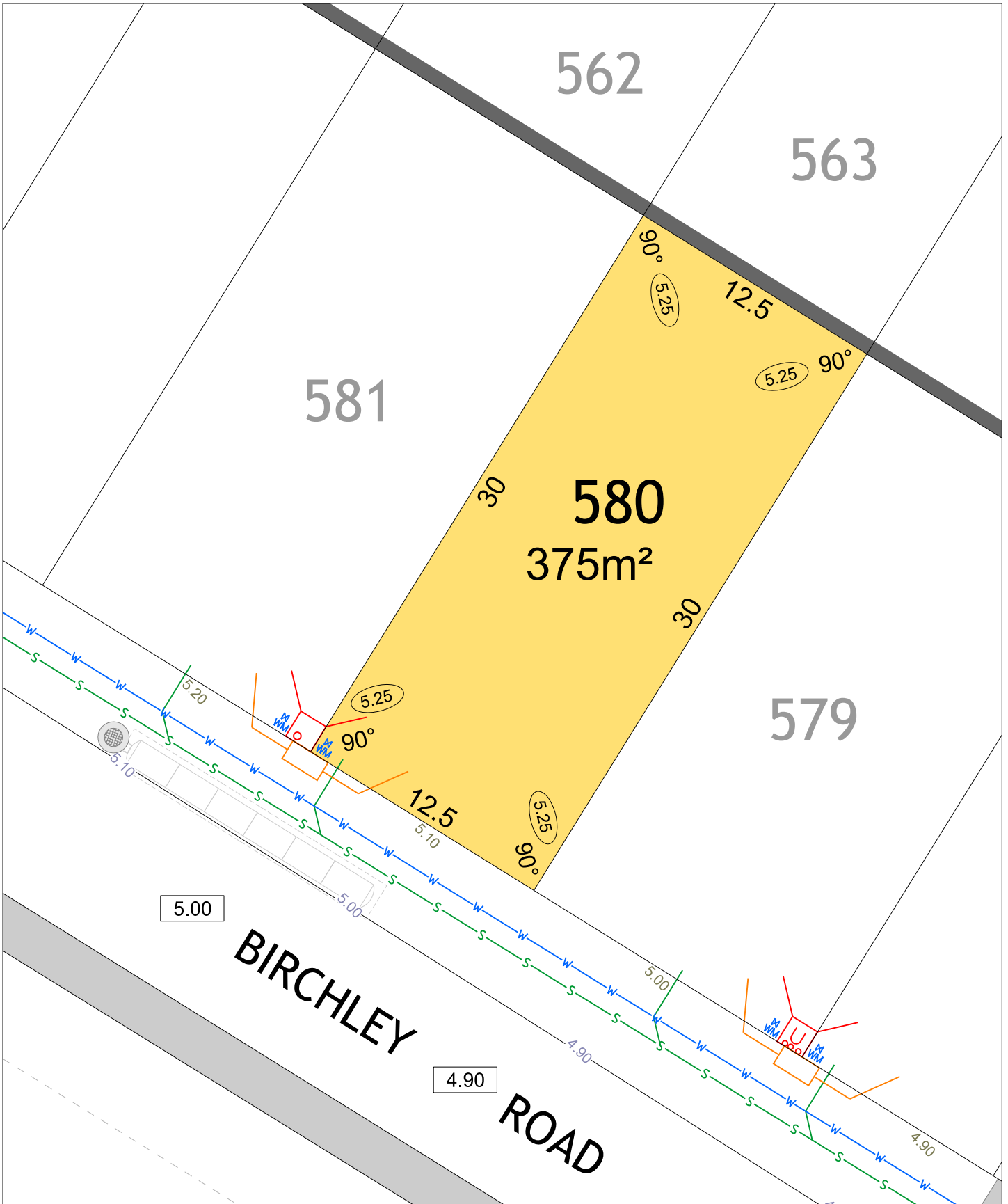
All dimensions and areas are subject to survey. The particulars on this brochure are supplied for information only and shall not be taken as a representation in any respect on the part of the Vendor or its agent. Authorities should be consulted when services are contained within lot boundaries as building restrictions may apply. All retaining walls and associated easements are shown exaggerated for clarity.

LEGEND

- WATER
- WATER METER
- VALVE / HYDRANT
- DRAINAGE
- SEWER / MANHOLE
- FOOTPATH
- GARAGE LOCATION
- RETAINED TREES

- POWER DOME - MINI PILLAR
- POWER DOME - UNIVERSAL PILLAR
- STREETLIGHTS
- EXISTING OVERHEAD POWER POLE & STAY WIRE
- PADMOUNT SITE
- OPTICAL FIBRE COMMUNICATION / PIT
- RETAINING WALL

- TOP OF KERB HEIGHT
- SPOT LEVEL
- PAD LEVEL
- ROAD LEVEL
- CROSS OVER (BY OWNER)
- RESIDENTIAL DENSITY**
- R30
- R40
- R50
- INDICATIVE BUSHFIRE ATTACK LEVELS (BAL-)**
- 12.5
- 29



FRASERS LANDING STAGE 8



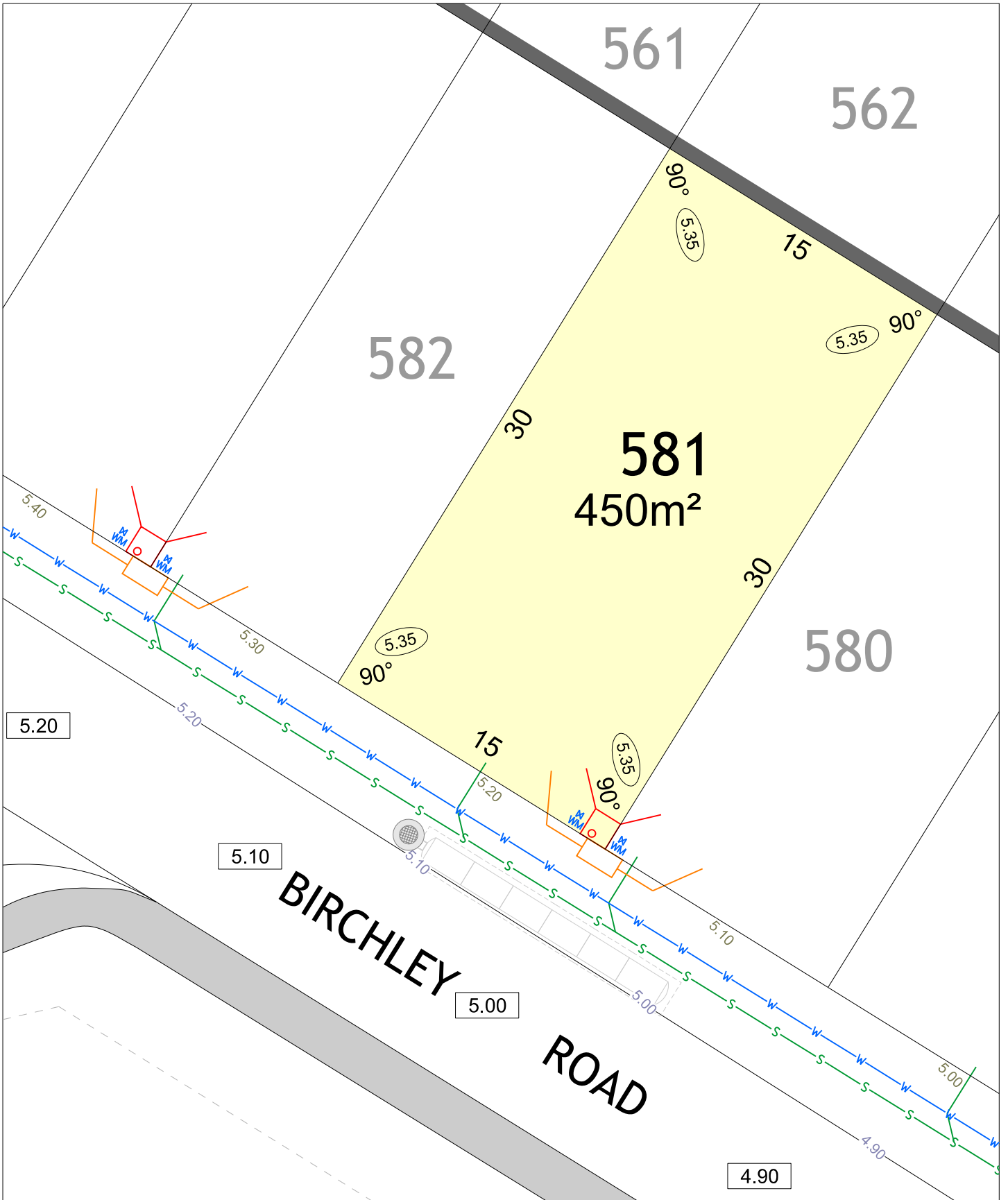
SCALE 1:250

MNG Ref: 94036lip-235d Date: 06/05/2024

All dimensions and areas are subject to survey. The particulars on this brochure are supplied for information only and shall not be taken as a representation in any respect on the part of the Vendor or its agent. Authorities should be consulted when services are contained within lot boundaries as building restrictions may apply. All retaining walls and associated easements are shown exaggerated for clarity.

LEGEND

	WATER		POWER DOME - MINI PILLAR		TOP OF KERB HEIGHT
	WATER METER		POWER DOME - UNIVERSAL PILLAR		SPOT LEVEL
	VALVE / HYDRANT		STREETLIGHTS		PAD LEVEL
	DRAINAGE		EXISTING OVERHEAD POWER POLE & STAY WIRE		ROAD LEVEL
	SEWER / MANHOLE		PADMOUNT SITE		CROSS OVER (BY OWNER)
	FOOTPATH		OPTICAL FIBRE COMMUNICATION / PIT		RESIDENTIAL DENSITY R30
	GARAGE LOCATION		RETAINING WALL		RESIDENTIAL DENSITY R40
	RETAINED TREES				RESIDENTIAL DENSITY R50
					INDICATIVE BUSHFIRE ATTACK LEVELS (BAL-)
					12.5
					29



FRASERS LANDING STAGE 8



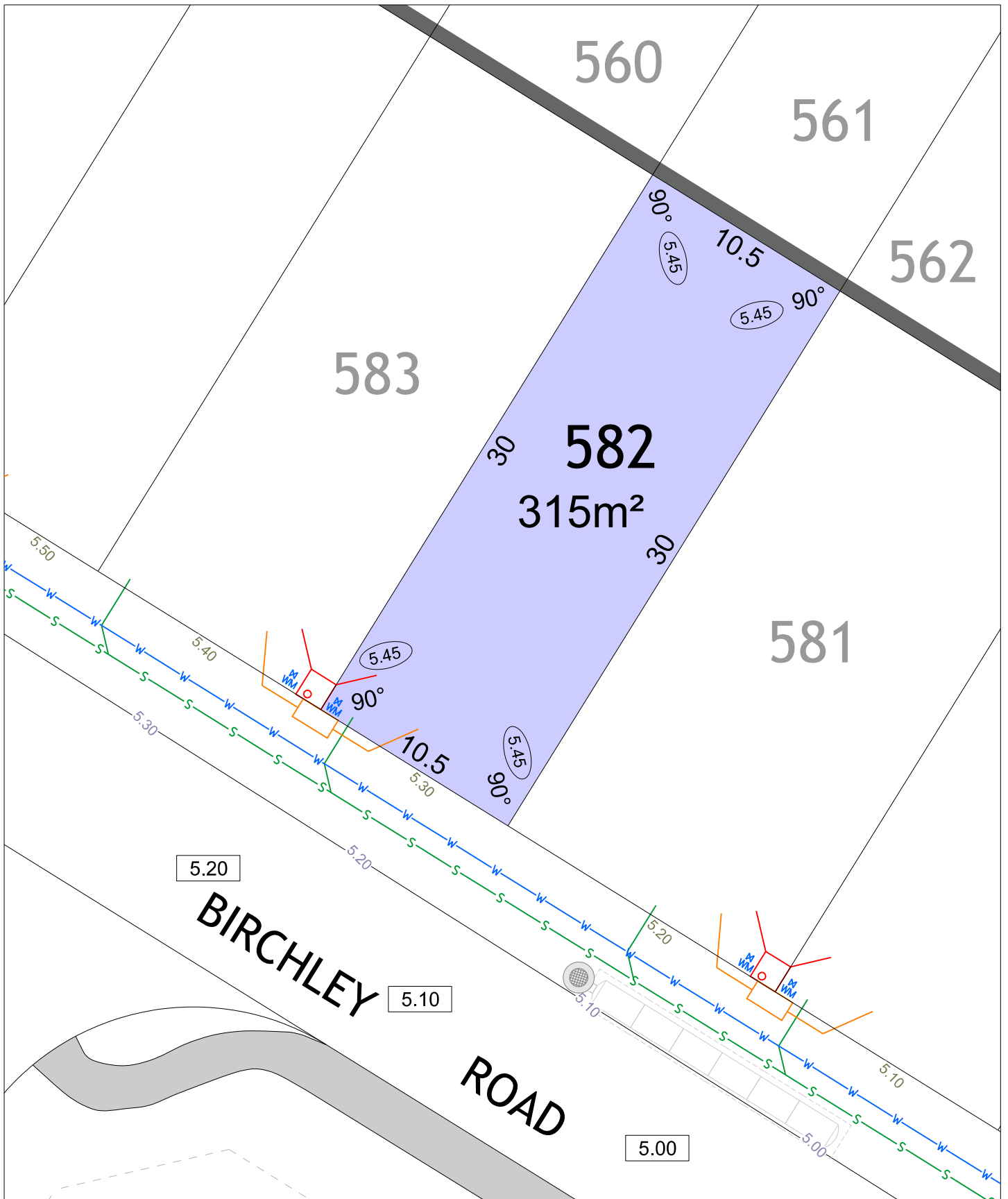
SCALE 1:250

MNG. Ref: 94036lip-235d Date: 06/05/2024

All dimensions and areas are subject to survey. The particulars on this brochure are supplied for information only and shall not be taken as a representation in any respect on the part of the Vendor or its agent. Authorities should be consulted when services are contained within lot boundaries as building restrictions may apply. All retaining walls and associated easements are shown exaggerated for clarity.

LEGEND

	WATER		POWER DOME - MINI PILLAR		TOP OF KERB HEIGHT
	WATER METER		POWER DOME - UNIVERSAL PILLAR		SPOT LEVEL
	VALVE / HYDRANT		STREETLIGHTS		PAD LEVEL
	DRAINAGE		EXISTING OVERHEAD POWER POLE & STAY WIRE		ROAD LEVEL
	SEWER / MANHOLE		PADMOUNT SITE		CROSS OVER (BY OWNER)
	FOOTPATH		OPTICAL FIBRE COMMUNICATION / PIT		RESIDENTIAL DENSITY R30
	GARAGE LOCATION		RETAINING WALL		RESIDENTIAL DENSITY R40
	RETAINED TREES				RESIDENTIAL DENSITY R50
					INDICATIVE BUSHFIRE ATTACK LEVELS (BAL-)
					12.5
					29



FRASERS LANDING STAGE 8



SCALE 1:250

MNG Ref: 94036lip-235d Date: 06/05/2024

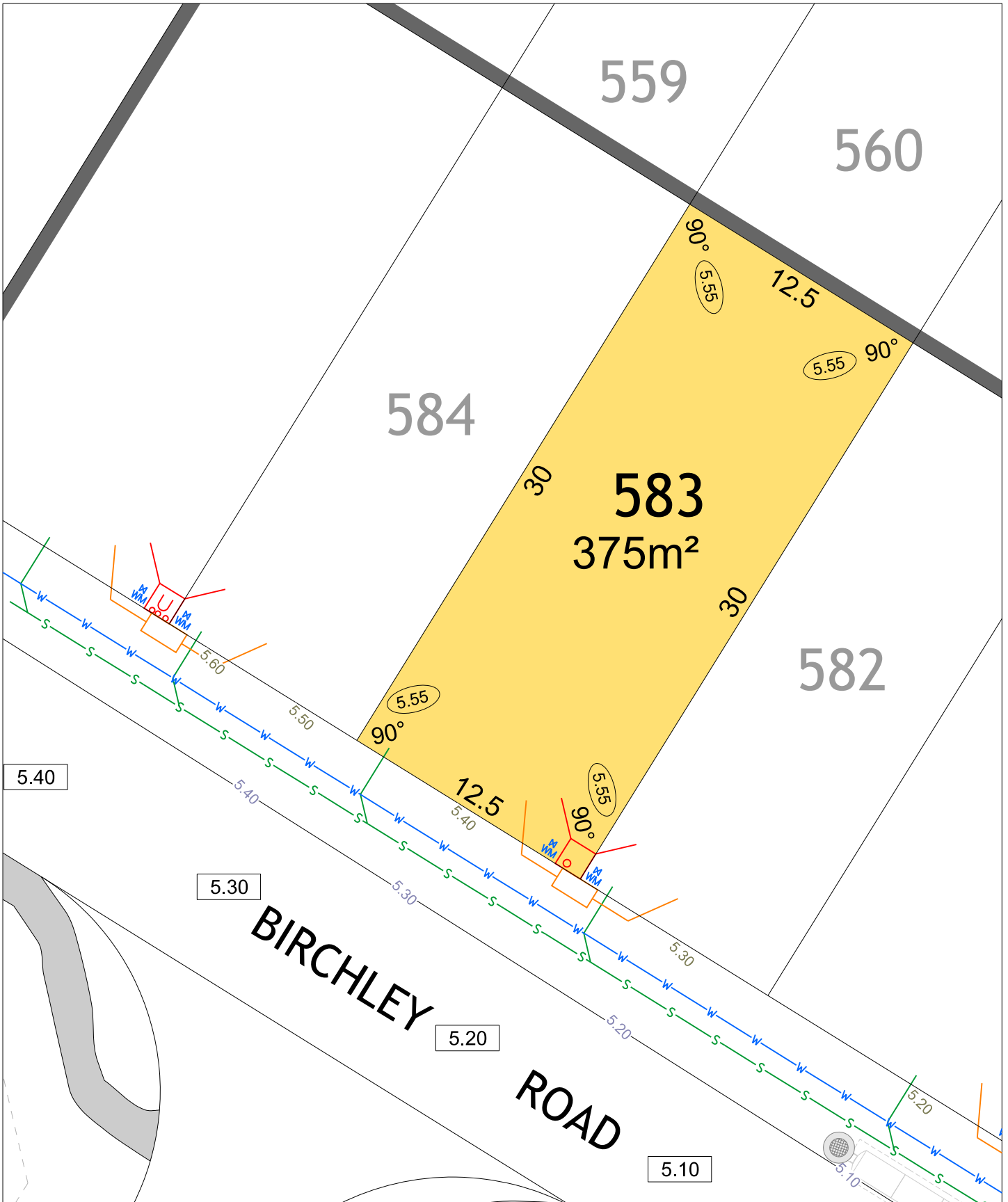
All dimensions and areas are subject to survey. The particulars on this brochure are supplied for information only and shall not be taken as a representation in any respect on the part of the Vendor or its agent. Authorities should be consulted when services are contained within lot boundaries as building restrictions may apply. All retaining walls and associated easements are shown exaggerated for clarity.

LEGEND

- WATER
- WATER METER
- VALVE / HYDRANT
- DRAINAGE
- SEWER / MANHOLE
- FOOTPATH
- GARAGE LOCATION
- RETAINED TREES

- POWER DOME - MINI PILLAR
- POWER DOME - UNIVERSAL PILLAR
- STREETLIGHTS
- EXISTING OVERHEAD POWER POLE & STAY WIRE
- PADMOUNT SITE
- OPTICAL FIBRE COMMUNICATION / PIT
- RETAINING WALL

- TOP OF KERB HEIGHT
- SPOT LEVEL
- PAD LEVEL
- ROAD LEVEL
- CROSS OVER (BY OWNER)
- RESIDENTIAL DENSITY**
- R30
- R40
- R50
- INDICATIVE BUSHFIRE ATTACK LEVELS (BAL-)**
- 12.5
- 29



FRASERS LANDING STAGE 8



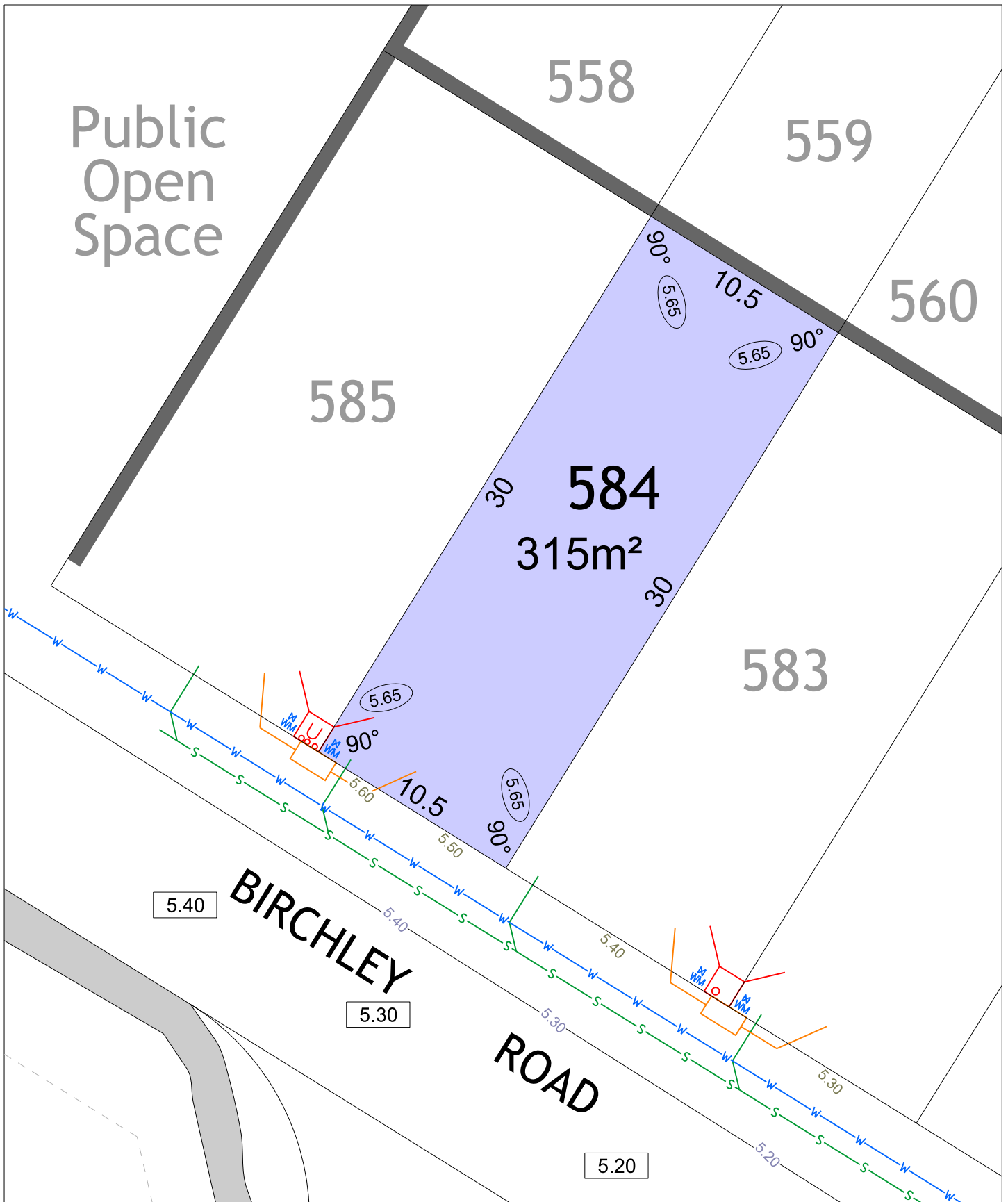
SCALE 1:250

MNG Ref: 94036lip-235d Date: 06/05/2024

All dimensions and areas are subject to survey. The particulars on this brochure are supplied for information only and shall not be taken as a representation in any respect on the part of the Vendor or its agent. Authorities should be consulted when services are contained within lot boundaries as building restrictions may apply. All retaining walls and associated easements are shown exaggerated for clarity.

LEGEND

	WATER		POWER DOME - UNIVERSAL PILLAR		TOP OF KERB HEIGHT
	WATER METER		POWER DOME - MINI PILLAR		SPOT LEVEL
	VALVE / HYDRANT		STREETLIGHTS		PAD LEVEL
	DRAINAGE		EXISTING OVERHEAD POWER POLE & STAY WIRE		ROAD LEVEL
	SEWER / MANHOLE		PADMOUNT SITE		CROSS OVER (BY OWNER)
	FOOTPATH		OPTICAL FIBRE COMMUNICATION / PIT		RESIDENTIAL DENSITY R30
	GARAGE LOCATION		RETAINING WALL		RESIDENTIAL DENSITY R40
	RETAINED TREES				RESIDENTIAL DENSITY R50
					INDICATIVE BUSHFIRE ATTACK LEVELS (BAL-)



FRASERS LANDING STAGE 8



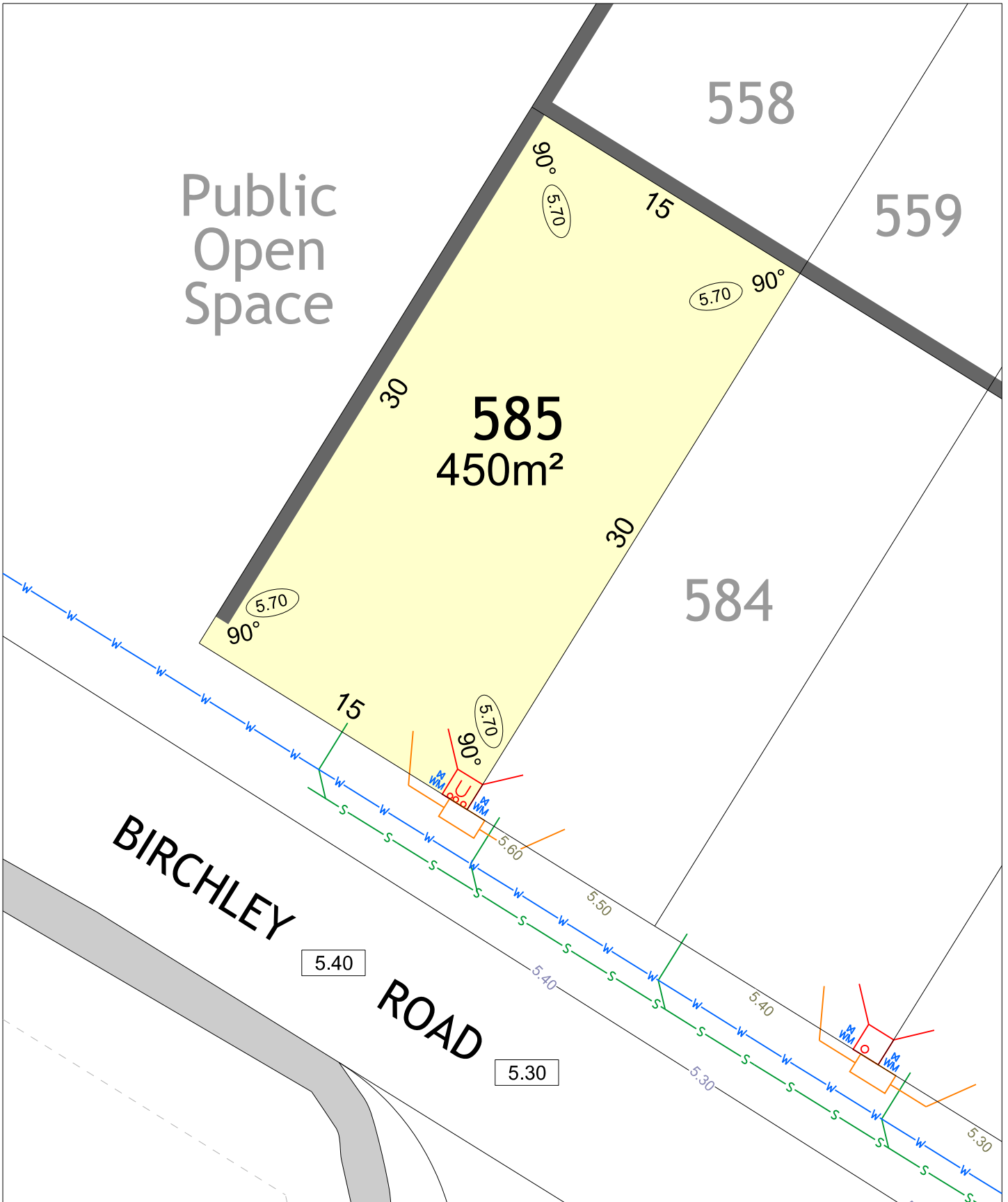
SCALE 1:250

MNG Ref: 94036lip-235d Date: 06/05/2024

All dimensions and areas are subject to survey. The particulars on this brochure are supplied for information only and shall not be taken as a representation in any respect on the part of the Vendor or its agent. Authorities should be consulted when services are contained within lot boundaries as building restrictions may apply. All retaining walls and associated easements are shown exaggerated for clarity.

LEGEND

	WATER		POWER DOME - MINI PILLAR		TOP OF KERB HEIGHT
	WATER METER		POWER DOME - UNIVERSAL PILLAR		SPOT LEVEL
	VALVE / HYDRANT		STREETLIGHTS		PAD LEVEL
	DRAINAGE		EXISTING OVERHEAD POWER POLE & STAY WIRE		ROAD LEVEL
	SEWER / MANHOLE		PADMOUNT SITE		CROSS OVER (BY OWNER)
	FOOTPATH		OPTICAL FIBRE COMMUNICATION / PIT		RESIDENTIAL DENSITY R30
	GARAGE LOCATION		RETAINING WALL		RESIDENTIAL DENSITY R40
	RETAINED TREES				RESIDENTIAL DENSITY R50
					INDICATIVE BUSHFIRE ATTACK LEVELS (BAL-)
					12.5
					29



FRASERS LANDING

STAGE 8



SCALE 1:250

MNG. Ref: 94036lip-235d Date: 06/05/2024

All dimensions and areas are subject to survey. The particulars on this brochure are supplied for information only and shall not be taken as a representation in any respect on the part of the Vendor or its agent. Authorities should be consulted when services are contained within lot boundaries as building restrictions may apply. All retaining walls and associated easements are shown exaggerated for clarity.

LEGEND

- WATER
- WATER METER
- VALVE / HYDRANT
- DRAINAGE
- SEWER / MANHOLE
- FOOTPATH
- GARAGE LOCATION
- RETAINED TREES

- POWER DOME - MINI PILLAR
- POWER DOME - UNIVERSAL PILLAR
- STREETLIGHTS
- EXISTING OVERHEAD POWER POLE & STAY WIRE
- PADMOUNT SITE
- OPTICAL FIBRE COMMUNICATION / PIT
- RETAINING WALL

- TOP OF KERB HEIGHT
- SPOT LEVEL
- PAD LEVEL
- ROAD LEVEL
- CROSS OVER (BY OWNER)
- RESIDENTIAL DENSITY**
- R30
- R40
- R50
- INDICATIVE BUSHFIRE ATTACK LEVELS (BAL-)**
- 12.5
- 29