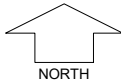




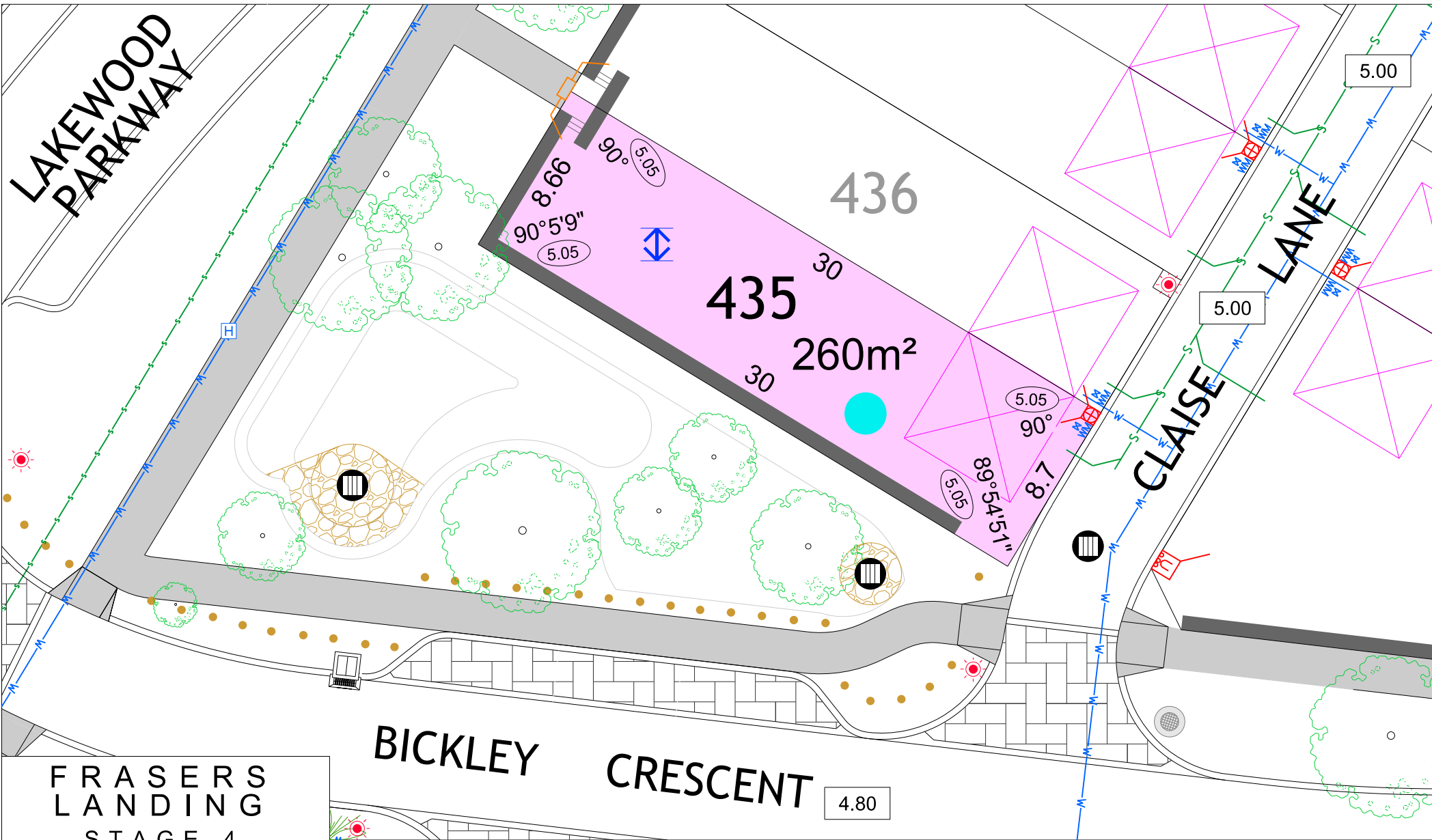
# FRASERS LANDING STAGE 4



MNG. Ref: 94036lip-245g Date: 29/05/2024  
 All dimensions and areas are subject to survey. The particulars on this brochure are supplied for information only and shall not be taken as a representation in any respect on the part of the Vendor or its agent. Authorities should be consulted when services are contained within lot boundaries as building restrictions may apply. All retaining walls and associated easements are shown exaggerated for clarity.

## LEGEND

	WATER		DRAINAGE		POWER DOME - MINI PILLAR		TOP OF KERB HEIGHT		RETAINED TREE
	WATER METER		DRAINAGE HOUSING CONNECTION/ MANHOLE		POWER DOME - UNIVERSAL PILLAR		SPOT LEVEL		RESIDENTIAL DENSITY
	VALVE / HYDRANT		OPTICAL FIBRE COMMUNICATION / PIT		BELOW GROUND POWER DOME		ROAD LEVEL		INDICATIVE BUSHFIRE ATTACK LEVELS (BAL-)
	SEWER / MANHOLE		RETAINING WALL		STREETLIGHTS		PAD LEVEL		GARAGE LOCATION
	FOOTPATH		FRONT ELEVATION HEIGHT REQUIREMENT - REFER TO DESIGN GUIDELINES		PADMOUNT SITE		CROSSOVER (BY OWNER)		



# FRASERS LANDING STAGE 4

SCALE 1:250

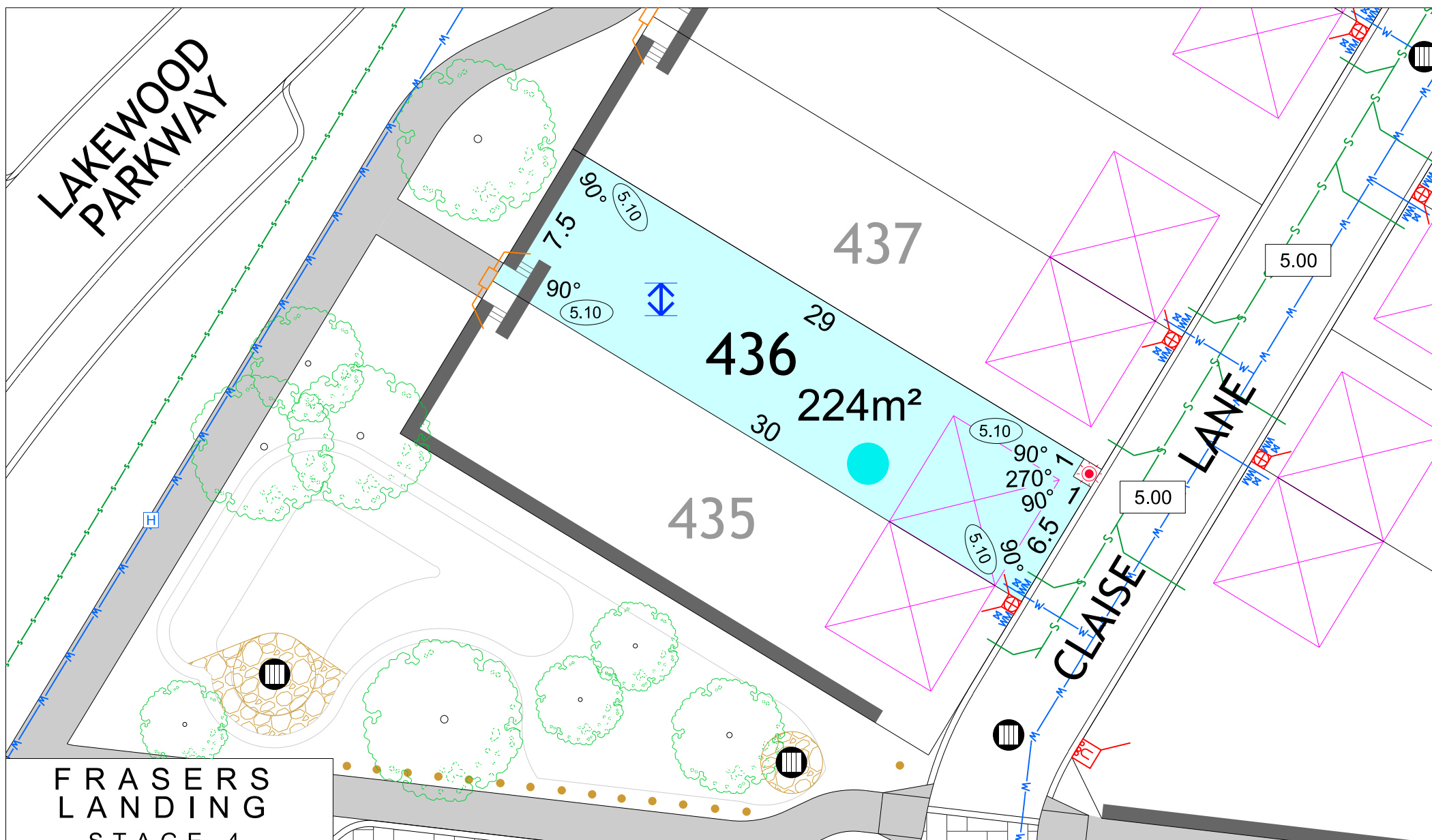


MNG. Ref: 94036lip-245g Date: 29/05/2024  
 All dimensions and areas are subject to survey. The particulars on this brochure are supplied for Information only and shall not be taken as a representation in any respect on the part of the Vendor or its agent. Authorities should be consulted when services are contained within lot boundaries as building restrictions may apply. All retaining walls and associated easements are shown exaggerated for clarity.

## LEGEND

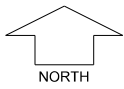
WATER	DRAINAGE	POWER DOME - MINI PILLAR	TOP OF KERB HEIGHT	RETAINED TREE
WATER METER	DRAINAGE HOUSING CONNECTION/ MANHOLE	POWER DOME - UNIVERSAL PILLAR	SPOT LEVEL	RESIDENTIAL DENSITY R30 R40 R50 R60 R80
VALVE / HYDRANT	OPTICAL FIBRE COMMUNICATION / PIT	BELOW GROUND POWER DOME	ROAD LEVEL	INDICATIVE BUSHFIRE ATTACK LEVELS (BAL-) 12.5 29
SEWER / MANHOLE	RETAINING WALL	STREETLIGHTS	PAD LEVEL	GARAGE LOCATION
FOOTPATH	FRONT ELEVATION HEIGHT REQUIREMENT - REFER TO DESIGN GUIDELINES	PADMOUNT SITE	CROSSOVER (BY OWNER)	

LAKEMOOD PARKWAY



FRASERS LANDING  
STAGE 4

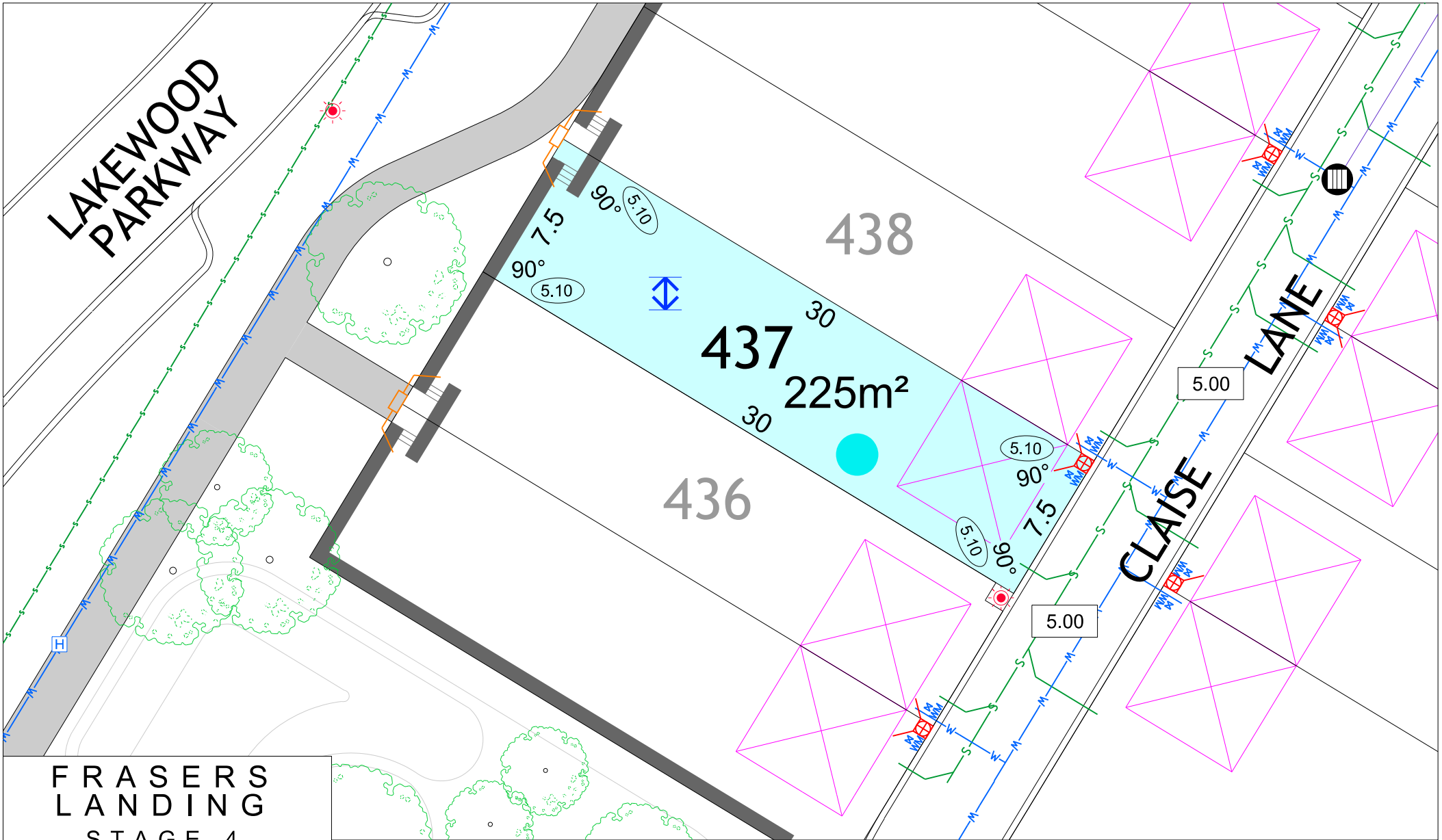
SCALE 1:250



MNG. Ref: 94036lip-245g Date: 29/05/2024  
 All dimensions and areas are subject to survey. The particulars on this brochure are supplied for Information only and shall not be taken as a representation in any respect on the part of the Vendor or its agent. Authorities should be consulted when services are contained within lot boundaries as building restrictions may apply. All retaining walls and associated easements are shown exaggerated for clarity.

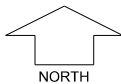
LEGEND

WATER	DRAINAGE	POWER DOME - MINI PILLAR	TOP OF KERB HEIGHT	RETAINED TREE
WATER METER	DRAINAGE HOUSING CONNECTION/ MANHOLE	POWER DOME - UNIVERSAL PILLAR	SPOT LEVEL	RESIDENTIAL DENSITY R30 R40 R50 R60 R80
VALVE / HYDRANT	OPTICAL FIBRE COMMUNICATION / PIT	BELOW GROUND POWER DOME	ROAD LEVEL	INDICATIVE BUSHFIRE ATTACK LEVELS (BAL-) ● 12.5 ● 29
SEWER / MANHOLE	RETAINING WALL	STREETLIGHTS	PAD LEVEL	GARAGE LOCATION
FOOTPATH	FRONT ELEVATION HEIGHT REQUIREMENT - REFER TO DESIGN GUIDELINES	PADMOUNT SITE	CROSSOVER (BY OWNER)	



# FRASERS LANDING STAGE 4

SCALE 1:250



MNG. Ref: 94036lp-245g Date: 29/05/2024  
 All dimensions and areas are subject to survey. The particulars on this brochure are supplied for Information only and shall not be taken as a representation in any respect on the part of the Vendor or its agent. Authorities should be consulted when services are contained within lot boundaries as building restrictions may apply. All retaining walls and associated easements are shown exaggerated for clarity.

## LEGEND

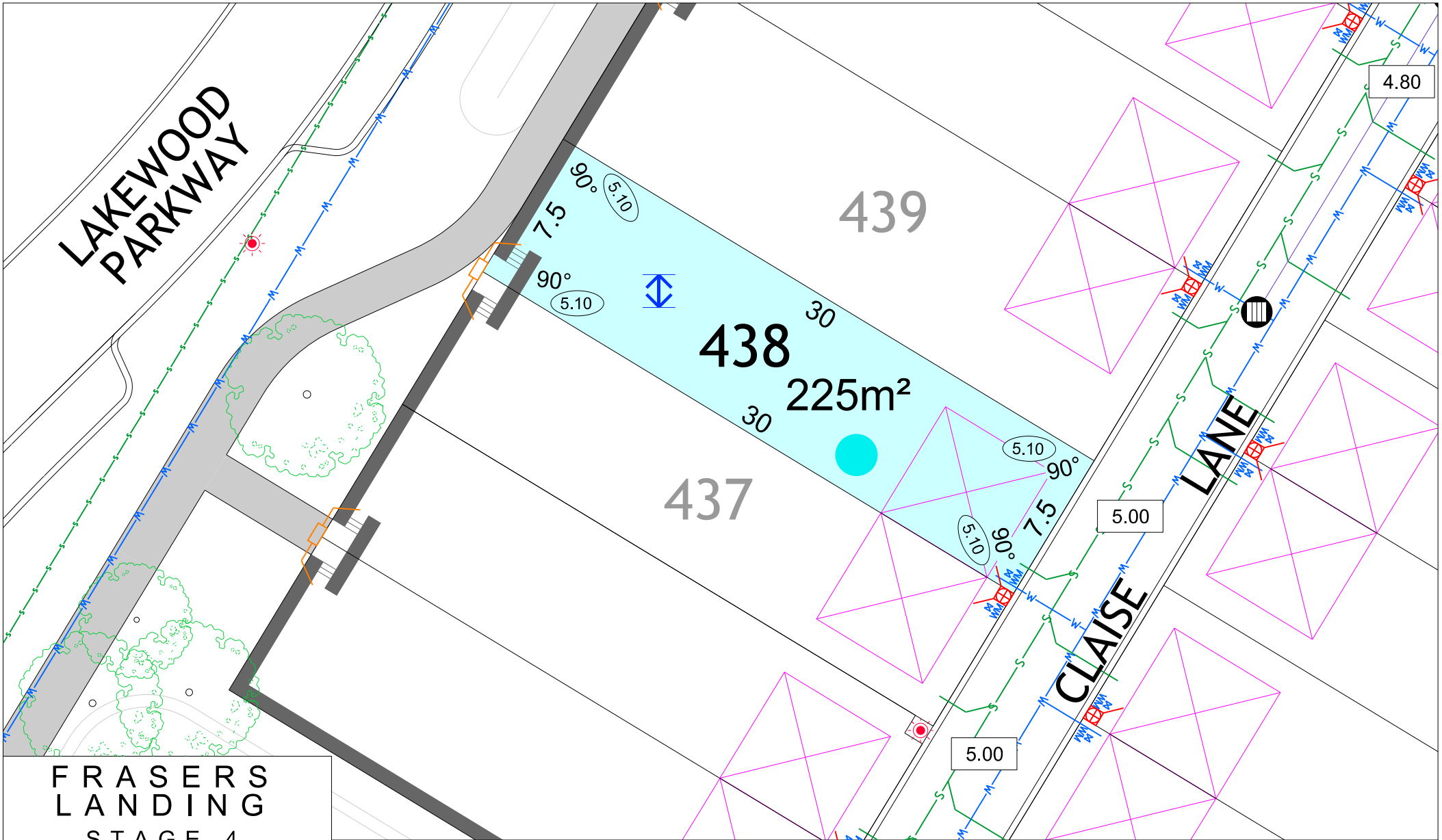
- WATER
- WATER METER
- VALVE / HYDRANT
- SEWER / MANHOLE
- FOOTPATH

- DRAINAGE
- DRAINAGE HOUSING CONNECTION / MANHOLE
- OPTICAL FIBRE COMMUNICATION / PIT
- RETAINING WALL
- FRONT ELEVATION HEIGHT REQUIREMENT - REFER TO DESIGN GUIDELINES

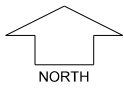
- POWER DOME - MINI PILLAR
- POWER DOME - UNIVERSAL PILLAR
- BELOW GROUND POWER DOME
- STREETLIGHTS
- PADMOUNT SITE

- TOP OF KERB HEIGHT
- SPOT LEVEL
- ROAD LEVEL
- PAD LEVEL
- CROSSOVER (BY OWNER)

- RETAINED TREE
- RESIDENTIAL DENSITY  
 R30 R40 R50 R60 R80
- INDICATIVE BUSHFIRE ATTACK LEVELS (BAL-)  
 12.5 29
- GARAGE LOCATION



# FRASERS LANDING STAGE 4



SCALE 1:250

MNG. Ref: 94036lp-245g Date: 29/05/2024  
 All dimensions and areas are subject to survey. The particulars on this brochure are supplied for Information only and shall not be taken as a representation in any respect on the part of the Vendor or its agent. Authorities should be consulted when services are contained within lot boundaries as building restrictions may apply. All retaining walls and associated easements are shown exaggerated for clarity.

## LEGEND

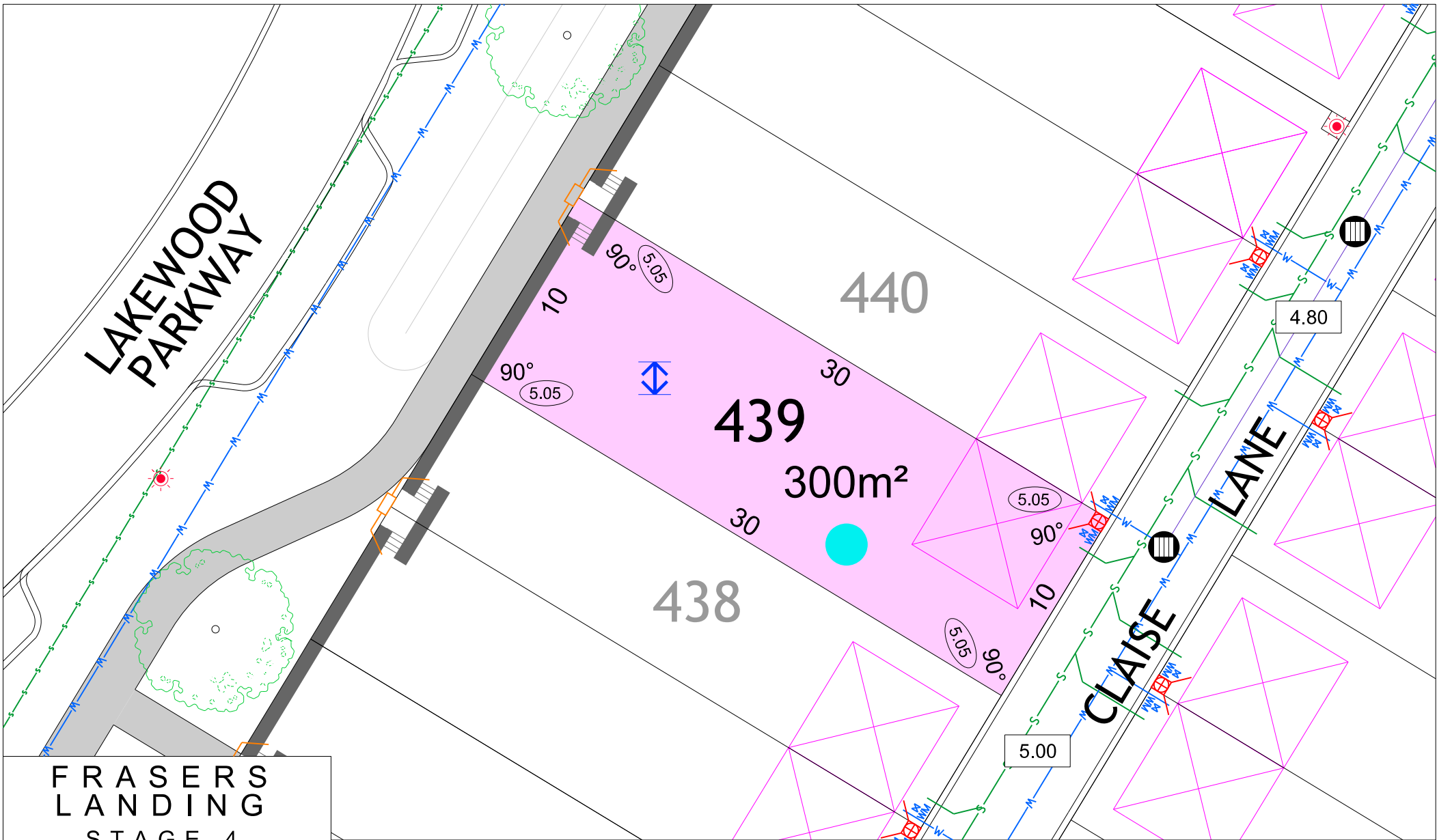
- WATER
- WATER METER
- VALVE / HYDRANT
- SEWER / MANHOLE
- FOOTPATH

- DRAINAGE
- DRAINAGE HOUSING CONNECTION / MANHOLE
- OPTICAL FIBRE COMMUNICATION / PIT
- RETAINING WALL
- FRONT ELEVATION HEIGHT REQUIREMENT - REFER TO DESIGN GUIDELINES

- POWER DOME - MINI PILLAR
- POWER DOME - UNIVERSAL PILLAR
- BELOW GROUND POWER DOME
- STREETLIGHTS
- PADMOUNT SITE

- TOP OF KERB HEIGHT
- SPOT LEVEL
- ROAD LEVEL
- PAD LEVEL
- CROSSOVER (BY OWNER)

- RETAINED TREE
- RESIDENTIAL DENSITY R30 R40 R50 R60 R80
- INDICATIVE BUSHFIRE ATTACK LEVELS (BAL-) 12.5 29
- GARAGE LOCATION



LAKELWOOD PARKWAY

440

439  
300m<sup>2</sup>

438

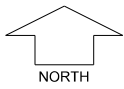
CLAISE LANE

4.80

5.00

FRASERS LANDING STAGE 4

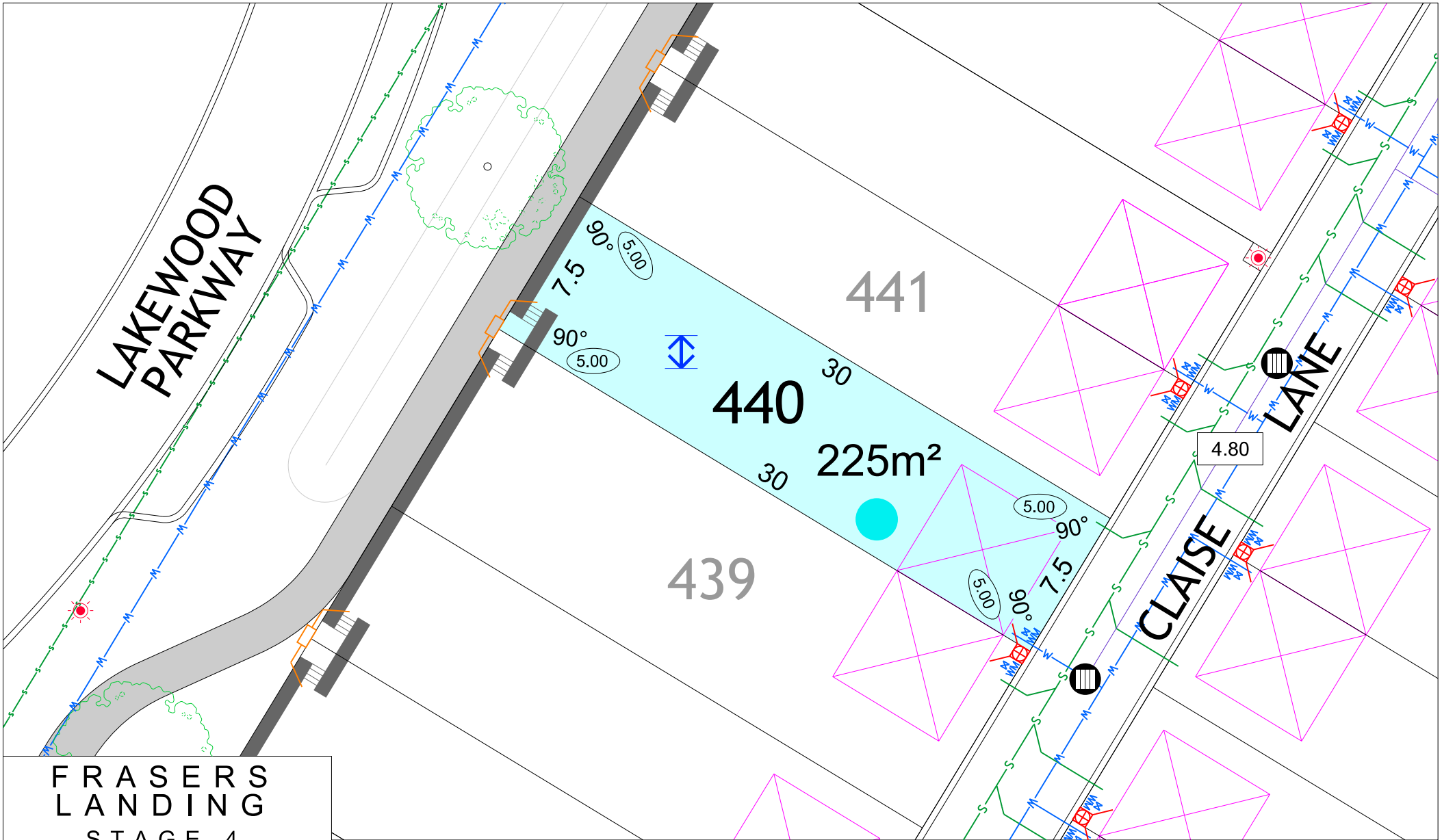
SCALE 1:250



MNG. Ref: 94036lip-245g Date: 29/05/2024  
 All dimensions and areas are subject to survey. The particulars on this brochure are supplied for Information only and shall not be taken as a representation in any respect on the part of the Vendor or its agent. Authorities should be consulted when services are contained within lot boundaries as building restrictions may apply. All retaining walls and associated easements are shown exaggerated for clarity.

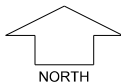
LEGEND

- |                 |   |                               |                      |   |
|-----------------|---|-------------------------------|----------------------|---|
| WATER           | DRAINAGE  | POWER DOME - MINI PILLAR      | TOP OF KERB HEIGHT   | RETAINED TREE   |
| WATER METER     | DRAINAGE HOUSING CONNECTION / MANHOLE                           | POWER DOME - UNIVERSAL PILLAR | SPOT LEVEL           | RESIDENTIAL DENSITY<br>R30 R40 R50 R60 R80              |
| VALVE / HYDRANT | OPTICAL FIBRE COMMUNICATION / PIT                               | BELOW GROUND POWER DOME       | ROAD LEVEL           | INDICATIVE BUSHFIRE ATTACK LEVELS (BAL-)<br>● 12.5 ● 29 |
| SEWER / MANHOLE | RETAINING WALL  | STREETLIGHTS                  | PAD LEVEL            | GARAGE LOCATION   |
| FOOTPATH        | FRONT ELEVATION HEIGHT REQUIREMENT - REFER TO DESIGN GUIDELINES | PADMOUNT SITE                 | CROSSOVER (BY OWNER) |   |



# FRASERS LANDING STAGE 4

SCALE 1:250



MNG. Ref: 94036lp-245g Date: 29/05/2024  
 All dimensions and areas are subject to survey. The particulars on this brochure are supplied for Information only and shall not be taken as a representation in any respect on the part of the Vendor or its agent. Authorities should be consulted when services are contained within lot boundaries as building restrictions may apply. All retaining walls and associated easements are shown exaggerated for clarity.

## LEGEND

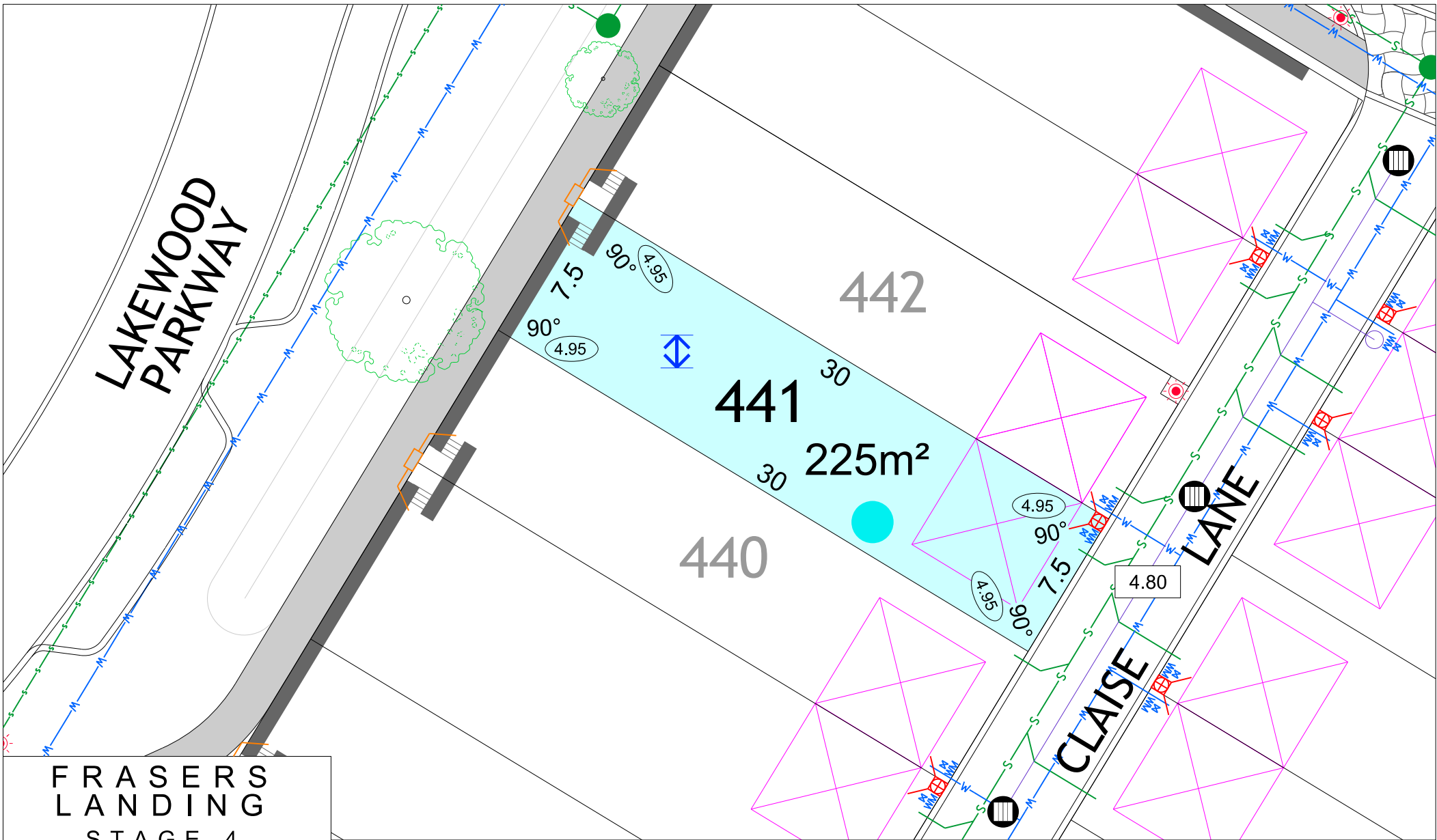
- WATER
- WATER METER
- VALVE / HYDRANT
- SEWER / MANHOLE
- FOOTPATH

- DRAINAGE
- DRAINAGE HOUSING CONNECTION / MANHOLE
- OPTICAL FIBRE COMMUNICATION / PIT
- RETAINING WALL
- FRONT ELEVATION HEIGHT REQUIREMENT - REFER TO DESIGN GUIDELINES

- POWER DOME - MINI PILLAR
- POWER DOME - UNIVERSAL PILLAR
- BELOW GROUND POWER DOME
- STREETLIGHTS
- PADMOUNT SITE

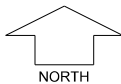
- TOP OF KERB HEIGHT
- SPOT LEVEL
- ROAD LEVEL
- PAD LEVEL
- CROSSOVER (BY OWNER)

- RETAINED TREE
- RESIDENTIAL DENSITY  
R30 R40 R50 R60 R80
- INDICATIVE BUSHFIRE ATTACK LEVELS (BAL-)  
● 12.5 ● 29
- GARAGE LOCATION



# FRASERS LANDING STAGE 4

SCALE 1:250



MNG. Ref: 94036lip-245g Date: 29/05/2024  
 All dimensions and areas are subject to survey. The particulars on this brochure are supplied for Information only and shall not be taken as a representation in any respect on the part of the Vendor or its agent. Authorities should be consulted when services are contained within lot boundaries as building restrictions may apply. All retaining walls and associated easements are shown exaggerated for clarity.

## LEGEND

- WATER
- WATER METER
- VALVE / HYDRANT
- SEWER / MANHOLE
- FOOTPATH

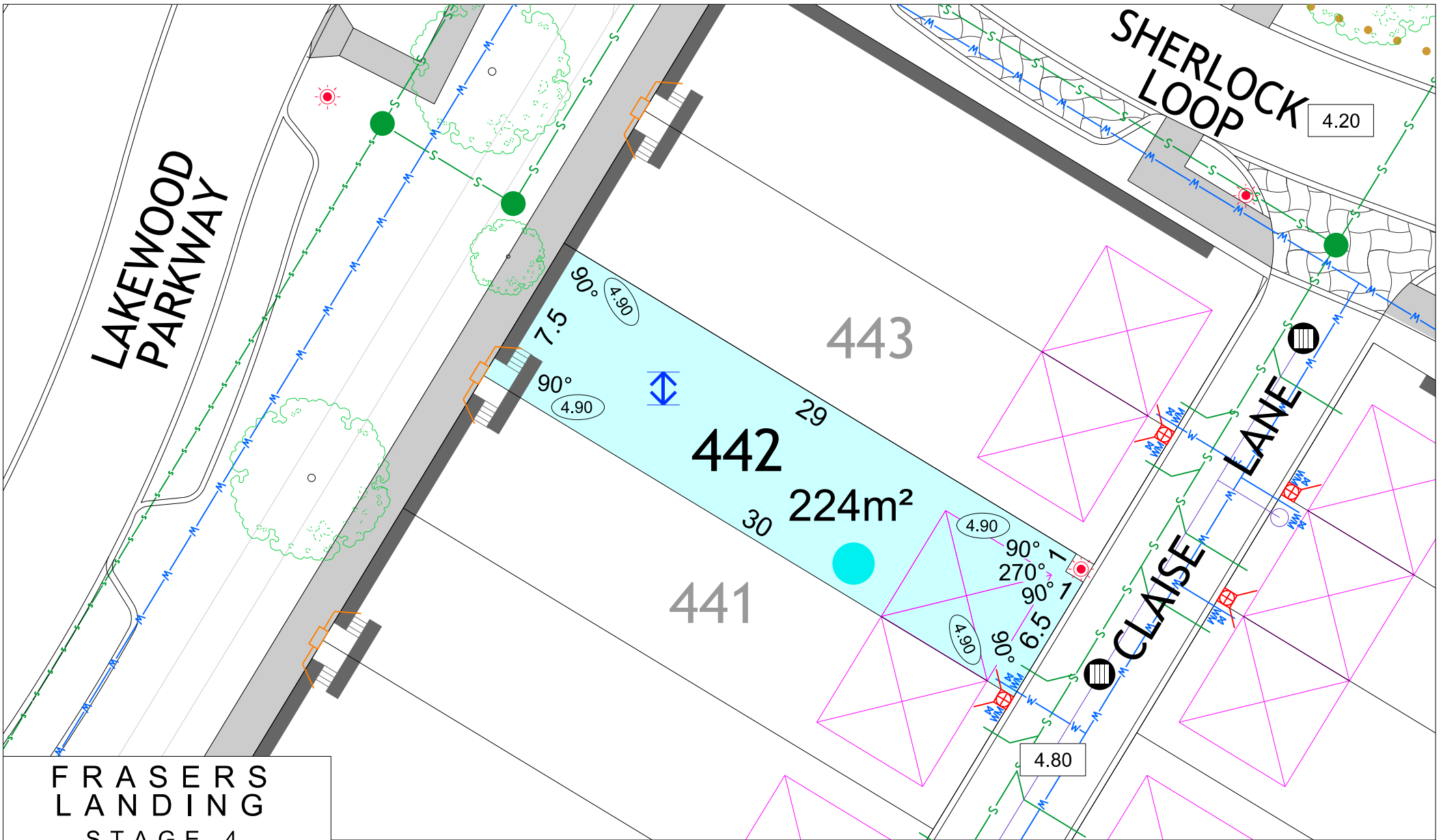
- DRAINAGE
- DRAINAGE HOUSING CONNECTION/ MANHOLE
- OPTICAL FIBRE COMMUNICATION / PIT
- RETAINING WALL
- FRONT ELEVATION HEIGHT REQUIREMENT - REFER TO DESIGN GUIDELINES

- POWER DOME - MINI PILLAR
- POWER DOME - UNIVERSAL PILLAR
- BELOW GROUND POWER DOME
- STREETLIGHTS
- PADMOUNT SITE

- TOP OF KERB HEIGHT
- SPOT LEVEL
- ROAD LEVEL
- PAD LEVEL
- CROSSOVER (BY OWNER)

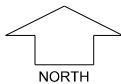
- RETAINED TREE
- RESIDENTIAL DENSITY  
 R30 R40 R50 R60 R80
- INDICATIVE BUSHFIRE ATTACK LEVELS (BAL-)  
 12.5 29
- GARAGE LOCATION





# FRASERS LANDING STAGE 4

SCALE 1:250



MNG. Ref: 94036lp-245g Date: 29/05/2024  
 All dimensions and areas are subject to survey. The particulars on this brochure are supplied for Information only and shall not be taken as a representation in any respect on the part of the Vendor or its agent. Authorities should be consulted when services are contained within lot boundaries as building restrictions may apply. All retaining walls and associated easements are shown exaggerated for clarity.

## LEGEND

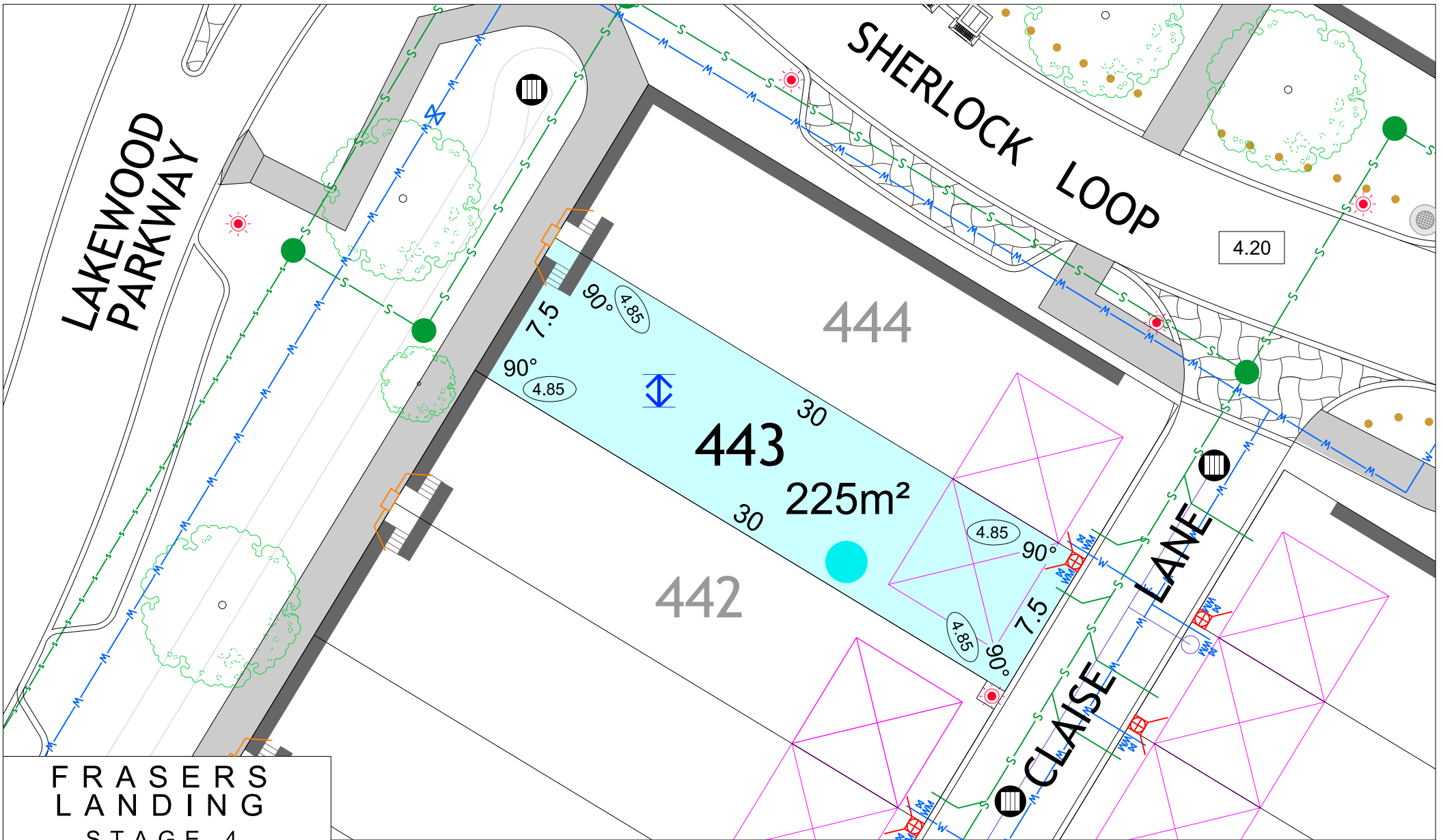
- WATER
- WATER METER
- VALVE / HYDRANT
- SEWER / MANHOLE
- FOOTPATH

- DRAINAGE
- DRAINAGE HOUSING CONNECTION/ MANHOLE
- OPTICAL FIBRE COMMUNICATION / PIT
- RETAINING WALL
- FRONT ELEVATION HEIGHT REQUIREMENT - REFER TO DESIGN GUIDELINES

- POWER DOME - MINI PILLAR
- POWER DOME - UNIVERSAL PILLAR
- BELOW GROUND POWER DOME
- STREETLIGHTS
- PADMOUNT SITE

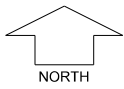
- TOP OF KERB HEIGHT
- SPOT LEVEL
- ROAD LEVEL
- PAD LEVEL
- CROSSOVER (BY OWNER)

- RETAINED TREE
- RESIDENTIAL DENSITY R30 R40 R50 R60 R80
- INDICATIVE BUSHFIRE ATTACK LEVELS (BAL-) 12.5 29
- GARAGE LOCATION



# FRASERS LANDING STAGE 4

SCALE 1:250



MNG. Ref: 94036lp-245g Date: 29/05/2024  
 All dimensions and areas are subject to survey. The particulars on this brochure are supplied for Information only and shall not be taken as a representation in any respect on the part of the Vendor or its agent. Authorities should be consulted when services are contained within lot boundaries as building restrictions may apply. All retaining walls and associated easements are shown exaggerated for clarity.

## LEGEND

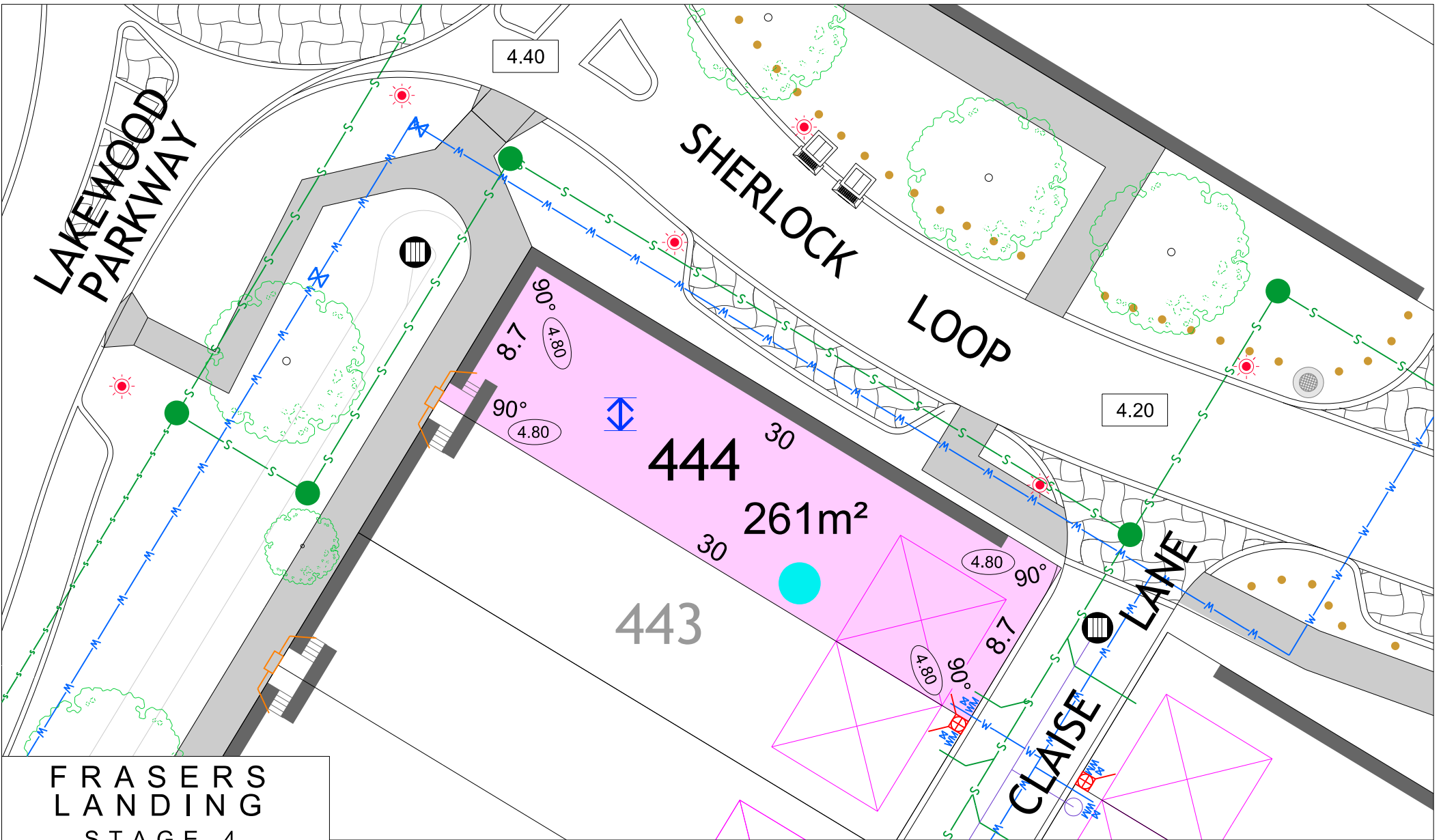
- WATER
- WATER METER
- VALVE / HYDRANT
- SEWER / MANHOLE
- FOOTPATH

- DRAINAGE
- DRAINAGE HOUSING CONNECTION / MANHOLE
- OPTICAL FIBRE COMMUNICATION / PIT
- RETAINING WALL
- FRONT ELEVATION HEIGHT REQUIREMENT - REFER TO DESIGN GUIDELINES

- POWER DOME - MINI PILLAR
- POWER DOME - UNIVERSAL PILLAR
- BELOW GROUND POWER DOME
- STREETLIGHTS
- PADMOUNT SITE

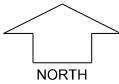
- TOP OF KERB HEIGHT
- SPOT LEVEL
- ROAD LEVEL
- PAD LEVEL
- CROSSOVER (BY OWNER)

- RETAINED TREE
- RESIDENTIAL DENSITY R30 R40 R50 R60 R80
- INDICATIVE BUSHFIRE ATTACK LEVELS (BAL-) 12.5
- 29
- GARAGE LOCATION



# FRASERS LANDING STAGE 4

SCALE 1:250



MNG. Ref: 94036lp-245g Date: 29/05/2024  
 All dimensions and areas are subject to survey. The particulars on this brochure are supplied for Information only and shall not be taken as a representation in any respect on the part of the Vendor or its agent. Authorities should be consulted when services are contained within lot boundaries as building restrictions may apply. All retaining walls and associated easements are shown exaggerated for clarity.

## LEGEND

- WATER
- WATER METER
- VALVE / HYDRANT
- SEWER / MANHOLE
- FOOTPATH

- DRAINAGE
- DRAINAGE HOUSING CONNECTION/ MANHOLE
- OPTICAL FIBRE COMMUNICATION / PIT
- RETAINING WALL
- FRONT ELEVATION HEIGHT REQUIREMENT - REFER TO DESIGN GUIDELINES

- POWER DOME - MINI PILLAR
- POWER DOME - UNIVERSAL PILLAR
- BELOW GROUND POWER DOME
- STREETLIGHTS
- PADMOUNT SITE

- TOP OF KERB HEIGHT
- SPOT LEVEL
- ROAD LEVEL
- PAD LEVEL
- CROSSOVER (BY OWNER)

- RETAINED TREE
- RESIDENTIAL DENSITY  
 R30 R40 R50 R60 R80
- INDICATIVE BUSHFIRE ATTACK LEVELS (BAL-)  
 12.5 29
- GARAGE LOCATION