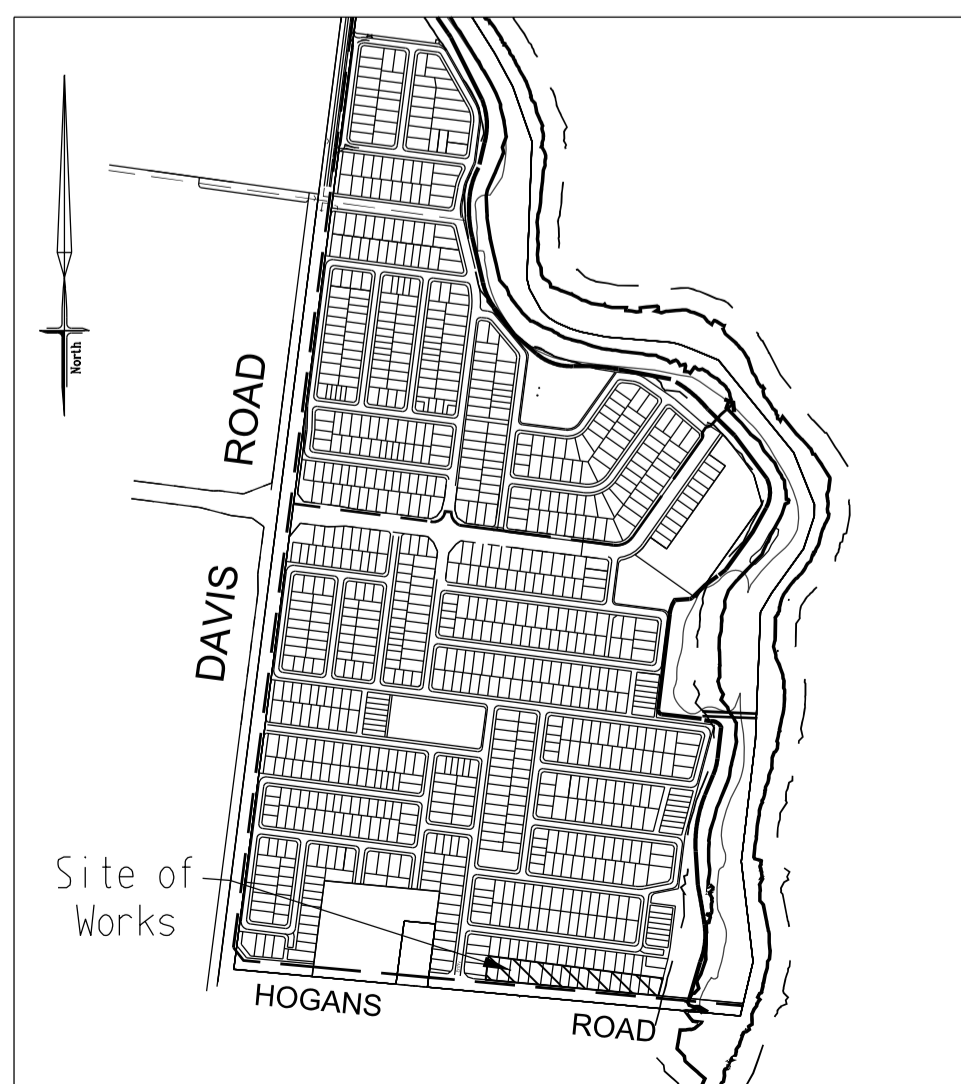
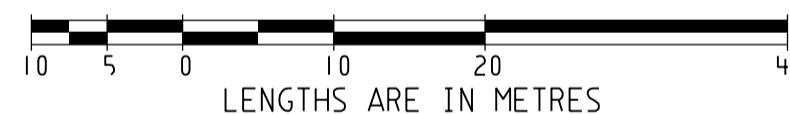


PLAN

SCALE 1:500

SCALE 1 : 500



LOCALITY PLAN
MELWAYS: 234 - G6
NTS

WARNING

BEWARE OF UNDERGROUND SERVICES
THE LOCATIONS OF UNDERGROUND SERVICES ARE APPROXIMATE ONLY AND THEIR EXACT POSITION SHOULD BE PROVEN ON SITE. NO GUARANTEE IS GIVEN THAT ALL EXISTING SERVICES ARE SHOWN.

ATTENTION TO CONTRACTOR

- IT IS THE CONTRACTORS RESPONSIBILITY TO ENSURE THAT THE DIGITAL PLAN, PROVIDED FOR SETOUT PURPOSES, MATCHES THE TBM COORDINATES SHOWN.
- Contractor to ensure that the site is pegged and/or set out checked by the licenced surveyor responsible for certifying the Plan of Subdivision prior to underground infrastructure being installed.
- Where concrete works about a sewer access chamber surround or similar structure, an expansion joint of approved material shall be provided between the two faces.

SYMBOL LEGEND

Drains	Prop	Exist	Ex/Natural/FS Level	28.51	28.51
Sewer <300	-S-	-S-	FS @ Building Line	28.51	28.51
Sewer >300	-S-	-S-	Top/Toe of Batter	28.51	28.51
Water	-W-	-W-	Top Ret. Wall Level	28.51	28.51
House Drain	-H-	-H-	100yr Flood Level	28.51	28.51
Property Inlet	-PI-	-PI-	Fill Prop/Ex	28.51	28.51
Street Sign	-S-	-S-	Cut Prop/Ex	28.51	28.51
PSM	-PSM-	-PSM-			
Retaining Wall	-RW-	-RW-			
Conduits 50mm	-C50-	-C50-			
Conduits 100mm	-C100-	-C100-			
Ex Gas/Elect/Tel	-G/E/T-	-G/E/T-			

SERVICES OFFSETS AND LOCATIONS

STREET NAME	Rd. RESERVE	WATER		GAS	ELECTRICITY		FIBRE TO THE HOME		Bk. of KERB	JOINT TRENCHING
		DW	NDW		CABLES	POLES	PPTH CABLES	PPTH PITS		
HOGANS ROAD (Ch366-55m to Ch615-50)	41-80	3-00N	2-25N	1-70N	4-70N	1-00 BOK	3-50N	3-50N	9-50N	G, W & FTH, E
HOGANS ROAD (Ch618-57m to Ch769-07)		8-00S*	7-25S*	6-70S*	1-50M**	1-00 BOK	2-20M**		VARIES	

* OFFSET FROM FUTURE TITLE BOUNDARY
** OFFSET FROM BACK OF KERB

SHEET INDEX

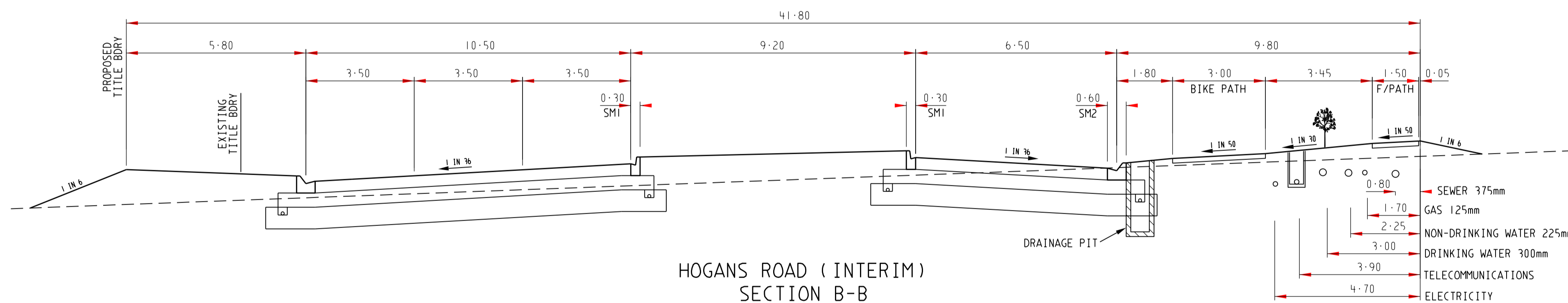
SHT No.	VER	DESCRIPTION
1	P2	DETAIL PLAN & SERVICES SCHEDULE
2	PI	NOTES AND TYPICAL SECTIONS

		breese pitt dixon pty. ltd. land surveyors civil engineers		1/19 cato street hawthorn east, 3123 telephone 8823 2300 fax no. 8823 2310	
MELWAY REF. 234-H-8		THE GROVE - STAGE 29 DAVIS ROAD - TARNEIT DETAIL PLAN		MUNICIPALITY WYNDHAM REFERENCE 8352 E/29	
SURVEY BPD		DESIGN SS		DRAWN SS	
VER	DATE	REMARKS	CHECKED	SCALE AS SHOWN	DATUM AHD
					DATE OCT'17
			SHEET 1 OF 2		

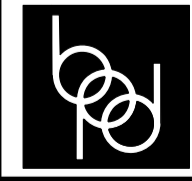
NOTES

- ALL WORKS TO BE CARRIED OUT IN ACCORDANCE WITH WYNDHAM CITY COUNCIL PLANS AND SPECIFICATIONS APPROVED BY COUNCIL AND TO THE SATISFACTION OF THE DIRECTOR ENGINEERING SERVICES OR HIS REPRESENTATIVE.
- COUNCIL AND ALL SERVICE AUTHORITIES TO BE NOTIFIED 7 CLEAR DAYS PRIOR TO COMMENCEMENT OF WORKS.
- DRAINAGE AND PITS TO BE SET OUT FROM OFFSETS SHOWN RATHER THAN FROM PIPE CHAINAGES.
- PROPERTY INLETS ARE TO BE PLACED 1.0m FROM THE LOW CORNER OF LOT UNLESS OTHERWISE SHOWN.
- HOUSE DRAIN PLACED 5.5m FROM LOW CORNER OF LOT UNLESS SHOWN OTHERWISE. HOUSE DRAIN TO BE CONNECTED TO STORMWATER DRAINS IF PRESENT. COVER AT THE BUILDING LINE TO BE MINIMUM OF 600mm.
- ALL PIPES UNDER ROAD PAVEMENTS TO BE RRJ RCP (CLASS 4). ALL OTHER PIPES TO BE RRJ RCP CLASS 2 UNLESS OTHERWISE SPECIFIED.
- NEW ASPHALT, CONCRETE K & C, PATHS AND DRIVEWAYS WILL BE MATCHED BY SAW CUTTING THE EXISTING SURFACE AND MATCHING NEATLY
- FOR ALL PRAM CROSSING REFER TO WYNDHAM CITY COUNCIL STANDARD DRAWING SD3-1
- ALL SEWER MAINS, CONDUITS & PIPES UNDER ROAD PAVEMENT, CONCRETE DRIVEWAYS, FOOTPATHS AND PARKING BAYS ARE TO BE BACKFILLED WITH 20mm CLASS 2 BASALTIC FCR COMPACTED TO THE SATISFACTION OF THE DIRECTOR ENGINEERING SERVICES OR HIS REPRESENTATIVE. WHERE SEWER MAINS ARE ADJACENT TO STORMWATER PIPELINES THE BACKFILL OF THE DEEPER TRENCH SHALL BE IN ACCORDANCE WITH COUNCIL'S STANDARD DRAWING SD 6-10 (1996)
- DRAINAGE PIPES BEHIND BACK OF KERB TO BE BACKFILLED WITH 20mm CLASS 3 BASALTIC ROCK COMPACTED TO THE SATISFACTION OF THE DIRECTOR ENGINEERING SERVICES OR HIS REPRESENTATIVE.
- AGRICULTURAL PIPE DRAINS TO BE PLACED BEHIND ALL KERB AND CHANNEL, KERB ONLY AND EDGE STRIPS. REFER TO GAA STANDARD DRAWING 020.
- PRIOR TO COMMENCEMENT OF WORKS ON SITE, THE CONTRACTOR MUST ENSURE THAT ALL MATTERS RELATING TO THE OCCUPATIONAL HEALTH AND SAFETY ACT 2004, INCLUDING ALL RELEVANT REGULATIONS, HAVE BEEN ADDRESSED. IN PARTICULAR, THE REQUIRED NOTIFICATIONS MUST BE CONVEYED TO THE VICTORIAN WORKCOVER AUTHORITY - HEALTH & SAFETY DIVISION WITH RESPECT TO TRENCHING OPERATIONS. DETAILS OF THE CONTRACTORS OCCUPATIONAL HEALTH & SAFETY PROCEDURES MUST BE LODGED WITH THE DIRECTOR ENGINEERING SERVICES OR HIS REPRESENTATIVE PRIOR TO COMMENCEMENT OF WORKS.
- BATTERS SHALL BE 1 IN 6 FOR CUT AND FILL UNLESS OTHERWISE SHOWN.
- PRIOR TO COMMENCEMENT OF WORKS, THE CONTRACTOR SHALL PROVIDE THE FOLLOWING INFORMATION:
a) SOURCE OF QUARRY MATERIAL.
b) OPTIMUM MOISTURE CONTENT AND MAXIMUM MODIFIED DRY DENSITY OF THE F.C.R. TO BE USED (FROM NATA APPROVED LABORATORY).
c) IF THE SOURCE OF THE QUARRY MATERIAL IS CHANGED DURING THE COURSE OF WORKS, NEW TEST RESULTS SHALL BE PROVIDED.
- NO TOP SOIL SHALL BE REMOVED FROM LAND COVERED BY THE SUBDIVISION WITHOUT THE WRITTEN CONSENT OF THE DIRECTOR ENGINEERING SERVICES OR HIS REPRESENTATIVE. THE TRUCK ROUTE FOR REMOVAL OF SPOIL FROM SITE IS TO BE SUBMITTED TO AND APPROVED BY THE DIRECTOR ENGINEERING SERVICES OR HIS REPRESENTATIVE IN WRITING PRIOR TO COMMENCEMENT OF ANY WORK.
- ON COMPLETION THE CONTRACTOR IS RESPONSIBLE FOR THE REMOVAL OF ALL RUBBISH AND SPOIL FROM THE SITE.
- THE CONTRACTOR SHALL ERECT AND MAINTAIN ALL NECESSARY SHORING AND PLANKING AND STRUTTING, DEWATERING DEVICES, BARRICADES, SIGNS, LIGHTS ETC. NECESSARY TO KEEP THE WORKS IN A SAFE AND STABLE CONDITION AND PROTECT THE PUBLIC FROM THE WORK AS PER AUSTRALIAN STANDARD AS1742.1.2.3 -1986.
- REMOVAL OR RETENTION OF EXISTING TREES OR VEGETATION MUST BE IN ACCORDANCE WITH THE APPROVED LANDSCAPE PLANS. NO MATERIAL IS TO BE BURNT ON SITE.
- ANY FOOTPATH OR KERB AND CHANNEL DAMAGED DURING CONSTRUCTION AND MAINTENANCE PERIOD TO BE REINSTATED TO THE SATISFACTION OF THE DIRECTOR ENGINEERING SERVICES OR HIS REPRESENTATIVE.
- LOTS TO BE GRADED TO THE SATISFACTION OF THE DIRECTOR ENGINEERING SERVICES OR HIS REPRESENTATIVE. ALL LOTS TO BE 1 IN 150 MINIMUM SLOPE FRONT TO REAR OR REAR TO FRONT.
- FILL AREAS TO BE STRIPPED OF TOPSOIL, FILLED USING APPROVED CLAY FILL, AND TOPSOIL REPLACED TO OBTAIN FINAL FILL LEVELS AS SHOWN ON PLANS. ALL FILLING TO BE CARRIED OUT IN 150mm LAYERS AND COMPACTED TO 95% OF MAXIMUM DRY DENSITY IN ACCORDANCE WITH AS1798-2007, SECTION 8.2, LEVEL 1.1 *GUIDELINES ON EARTHWORKS FOR COMMERCIAL AND RESIDENTIAL DEVELOPMENT*; ON COMPLETION THE CONTRACTOR SHALL PRESENT A *LEVEL 1* TYPED REPORT FROM A NATA REGISTERED SOIL TESTING LABORATORY, NOMINATING THE EXTENT OF FILL PLACED, ITS CONFORMANCE WITH THE SPECIFICATION AND ITS CLASSIFICATION AS *CONTROLLED FILL*. IF ANY SUBSTANDARD FILLING IS ENCOUNTERED ON THE SITE IT MUST BE REMOVED AND REPLACED WITH APPROVED FILL MATERIAL PROPERLY COMPACTED TO COUNCIL REQUIREMENTS. A GEO-TECHNICAL REPORT MUST BE SUBMITTED SHOWING DETAILS OF DEPTH, TYPE OF MATERIAL AND DENSITY OF THE FILL AREAS CONCERNED.
- THE CONTRACTOR IS RESPONSIBLE FOR ENSURING THAT ALL IMPORTED FILL MATERIAL, INCLUDING TOPSOIL, SATISFIES THE DESCRIPTION FOR CLEAN FILL MATERIAL IN EPA BULLETIN PUBLICATION No. 448 (SEPT '95) AND SUBSEQUENT REVISIONS. THE CONTRACTOR SHALL PROVIDE VERIFICATION INCLUDING TEST CERTIFICATES TO THE DIRECTOR ENGINEERING SERVICES OR HIS REPRESENTATIVE.
- ALL ENGINEERED FILL SHOULD BE COMPACTED TO ACHIEVE AT LEAST 95% STANDARD DRY DENSITY RATIO WITHIN +/- 3.0% OF THE OPTIMUM MOISTURE CONTENT
- WHERE WORKS ARE IN THE VICINITY OF EXISTING SERVICES THESE SERVICES ARE TO BE LOCATED AND THE VARIOUS AUTHORITIES NOTIFIED PRIOR TO THE COMMENCEMENT OF WORKS.
- THE WATER CONDUIT OFFSET FROM THE LOT BOUNDARY IS GIVEN ON THE WATER RETICULATION PLAN. THE CONTRACTOR MUST CONSTRUCT CONDUITS TO ACCORD WITH THE GIVEN OFFSET AND ENSURE THAT THE CONCRETE MARKS THE KERB AND FOOTPATH EXACTLY ABOVE THE CONDUIT.
- TELSTRA/NBN Co TO BE NOTIFIED 7 DAYS PRIOR TO CONCRETE WORKS BEING PLACED.
- ALL DRIVEWAYS TO BE OFFSET 0.75m FROM SIDE BOUNDARY OR EASEMENT UNLESS OTHERWISE SHOWN.
- TRANSITION FROM STANDARD TO ROLLOVER KERB AND CHANNEL AT SIDE ENTRY PITS.
- B2 PROFILE KERB AND CHANNEL TO BE CONSTRUCTED IN ALL STREET UNLESS OTHERWISE SHOWN.
- PSM'S TO BE LANDS DEPT. HIGH STABILITY TYPE. REFER TO COUNCIL STANDARD DRAWING SD11-10. AMG CO-ORDINATES AND AHD LEVEL TO BE SUPPLIED TO COUNCIL. (TO BE INSTALLED BY OTHERS)

- ALL PAVEMENTS TO BE COMPACTED TO 98% AUSTRALIAN DRY DENSITY. PAVEMENT DEPTH MAY NOT BE MODIFIED UNLESS APPROVED BY COUNCIL TO THE SATISFACTION OF THE DIRECTOR ENGINEERING SERVICES OR HIS REPRESENTATIVE.
- ALL 125mm THICK FOOTPATH CONCRETE PAVING TO BE REINFORCED WITH SL72 MESH AND MUST BE CONSTRUCTED WITH A 50mm UNDERLAYER OF 20mm COMPACTED CLASS 3 FCR IN ACCORDANCE WITH GAA STANDARD DRAWING 006.
- THE CONTRACTOR MUST COMPLETE A LEVEL CHECK BETWEEN ALL TBM'S TO VERIFY LEVEL VALUES BEFORE COMMENCEMENT OF WORKS. ALL TBM'S AND CONTROL POINTS ARE TO BE MAINTAINED AND PROTECTED AT ALL TIMES DURING CONSTRUCTION. SHOULD ANY MARKS BE DISTURBED, THE CONTRACTOR WILL IMMEDIATELY NOTIFY THE DEVELOPER'S CONSULTANT TO ARRANGE RE-INSTATEMENT AT THE CONTRACTORS EXPENSE.
- ALL SIGNS AND TRAFFIC CONTROL MEASURES SHALL BE IN ACCORDANCE WITH AS 1742-1.2.3 -1986. LINE MARKING SHALL BE IN ACCORDANCE WITH VICROADS REQUIREMENT WITH LATERAL WORKS AND ARROWS BEING COLD APPLIED PLASTIC TROWELLED INTO PLACE (MATERIAL DEGADUR OR PLASTELINE) AND LONGITUDINAL LINES BEING EXTRUDED THERMOPLASTIC MATERIAL (VICROADS SPECIFICATION SEE SECTION 710 & 722).
- PRIOR TO COMMENCEMENT OF WORKS, THE CONTRACTOR MUST SUBMIT A SMP TO THE DEVELOPER'S CONSULTANT FOR APPROVAL. THE CONTRACTOR MUST COMPLY WITH THE RECOMMENDATIONS OF THE ENVIRONMENT PROTECTION AUTHORITY PUBLICATION No.275 "CONSTRUCTION TECHNIQUES FOR SEDIMENT POLLUTION CONTROL" AND MW SITE ENVIRONMENTAL MANAGEMENT POLICY 3.8.2. APPROPRIATE SILTATION CONTROL IS TO BE MAINTAINED THROUGHOUT THE CONSTRUCTION AND MAINTENANCE PERIOD OF THE WORKS.
- PRIOR TO START OF WORKS ON SITE, A PRE-COMMENCEMENT MEETING MUST BE HELD BETWEEN DIRECTOR ENGINEERING SERVICES OR HIS REPRESENTATIVE, THE DEVELOPER'S CONSULTANT AND THE CONTRACTOR.
- STREET NAMES TO BE INSTALLED ON PUBLIC LIGHTING POLES AT INTERSECTIONS WHERE POSSIBLE. ALL SIGNS ARE TO BE INSTALLED IN ACCORDANCE WITH COUNCIL STANDARD DRAWING SD11-1.
- LOCATION OF ALL UNDERGROUND SERVICE CONDUITS TO BE MARKED ON BOTH SIDES OF THE KERB AND CHANNEL WITH W FOR WATER, RW FOR RECYCLED WATER, G FOR GAS, T FOR TELECOMMUNICATIONS & E FOR ELECTRICITY (REFER TO STANDARD DRAWING SD11-8).
- THE CONTRACTOR IS TO INSTALL BLUE RRPMS ON THE ROAD CENTRLINE AND MARKER POSTS TO INDICATE THE LOCATION OF FIRE PLUGS OR HYDRANTS IN ACCORDANCE WITH WYNDHAM CITY COUNCIL'S STANDARD DRAWING SD11-11.
- WATER / RECYCLE WATER CONDUITS TO BE 100mm AND GAS TO BE 50mm DIAMETER.
- ALL SERVICE TRENCHES UNDER CONCRETE FOOTPATHS AND VEHICLE CROSSINGS TO BE BACKFILLED WITH CLASS 3 CRUSHED ROCK MATERIAL.
- CONTRACTOR TO INSTALL IRRIGATION CONDUITS REFER TO IRRIGATION INFRASTRUCTURE PLAN PREPARED BY MAKE IT WET PTY LTD FOR LOCATIONS AND SIZES.
- TBM TO BE RELOCATED BY A SURVEYOR AFTER WORKS HAVE BEEN COMPLETED.
- REFER COUNCIL'S STD DWG WCC SD7-2 FOR SUBSURFACE DRAINAGE AT ALL LIMIT OF WORKS WHERE TEMPORARY EDGE STRIP PROVIDED AND AT ALL INTERSECTING PAVEMENTS.
- REFER COUNCIL'S STD DWG WCC SD1-5 FOR ALL INTERSECTION WHERE THE KERB RETURNS MEETS THE SPOON DRAIN.



HOGANS ROAD (INTERIM)
SECTION B-B

AMENDMENTS				 breese pitt dixon pty. ltd. land surveyors civil engineers 1/19 cato street hawthorn east, 3123 telephone 8823 2300 fax no. 8823 2310
				MELWAY REF. 234-H-8 SURVEY BPD DESIGN SS DRAWN SS
				THE GROVE - STAGE 29 DAVIS ROAD - TARNEIT NOTES AND LOCALITY PLAN
				MUNICIPALITY WYNDHAM REFERENCE 8352 E/29
				SCALE AS SHOWN DATUM AHD DATE OCT'17 SHEET 2 OF 2 A