

GUIDELINES FOR THE CLEANING AND CARE OF TAPWARE

CARE AND MAINTENANCE

Please follow these cleaning and care instructions to best maintain the finish of the product you have selected. The ideal care for all fittings is to dry them with a soft cloth after each use, which will prevent mineral deposits. Fittings should be regularly cleaned with warm water or a mild pH-neutral liquid soap and water and polished with a clean, soft cloth. A Microfibre cloth is gentle and effective for cleaning without scratching and needs only to be dampened to clean the product. Residue left by personal hygiene products such as liquid soap, toothpaste, shampoo and shower gel can cause damage. Always rinse these off the fittings with clean water immediately after use. Under no circumstances should harsh cleaning agents containing acidic, caustic or abrasive components or citrus, bleach or alcohol-based substances be used to clean these fittings and should not be allowed to remain on metal finishes. Avoid dripping or over spraying such cleaning agents by covering the fixtures with a cloth or towel, metal finishes splashed with these products should be immediately rinsed with clean water and dried. Do not use abrasive cloths, scouring pads, scrub sponges, steel wool etc.

It is essential that moving parts such as swivel shower roses and swivel spouts etc are checked periodically to ensure that they are lubricated for ease of adjustment. Also, due to large amounts of impurities in most water supplies a regular cleaning of aerators and shower heads is recommended.

HOMEOWNERS GUIDE TO PLATED FINISHES

NOTE: Scouring, steel wool, Scotch rite, powder or abrasive cleaners should not be used on any plated finishes.

Arcorp Enterprises PTY LTD

Sydney:
9/6-8 Herbert Street, St
Leonards NSW 2064
Ph: 02 9413 3533

www.paccojaanson.com.au

Melbourne:
360 Boundary Road,
Dingley VIC 3172
Ph: 03 9551 8452

Chrome, Brushed Chrome, & Ice Grey: The most durable of the electroplated finishes, cleaning as per the guidelines above.

Matt Black, Gunmetal & Satin Chrome: Low Gloss electroplated finishes with a matt appearance. Cleaning as per guidelines above. Avoid the use of waxes or polishes as they will fill the surface and give the part a polished look.

Gloss Black: High Gloss electroplated finish, not as resistant to scratching or scuffing as standard chrome. Cleaning and care as per guidelines above.

French Gold & Urban Brass: These products should be only cleaned with a microfibre cloth, warm water and pH neutral liquid soap as per guidelines above.

Stainless Steel: These products are made from 316 marine grade steel. Although rust resistant, this product can develop tea-coloured stains. These can be removed with warm, soapy water and a soft cloth. For difficult stains, use a synthetic scourer with soapy water, and work in the direction of the surface grain. After cleaning, rinse with clean water and towel dry. DO NOT use steel wool or steel brushes as these leave particles that will corrode the steel.

Nickel and Brushed Nickel: These are electroplated finishes which over time will develop an individual patina, giving a distinctive classical look. Nickel finishes do require regular care. It is important to clean nickel finishes after use to prevent tarnishing. Water should be dried off and prevented from building up and forming hard water spots (which if left can be difficult to remove). It is highly recommended to clean your tapware regularly as per the guidelines above. If required waxing and cleaning with a soft wax like a Mr Sheen will help protect.

Natural Brass: As a living finish, also known as Polished uncoated bare brass, this is an un-lacquered brass that has been buffed to a shiny finish. Over time the polished brass will garner a patina with a unique character and the surface lose some of its brightness. Brass fittings can be cleaned routinely with mild soap and water which will not alter the patina development. If desired the shine can be restored with a very mild abrasive cleaner like Brasso.

Aged Brass: This accelerated aged look is achieved by chemically treating each brass piece. Tone can vary depending on whether the brass is extruded, cast, machined or forged, but the result is a beautiful organic appearance. This finish will further evolve over time altering the visual appearance. The degree of change is dependent on many factors such as perspiration, cleaning agents, wear and abrasion. When this finish is first supplied it has a sheen or gloss appearance which will dull over time. Cleaning and care as per guidelines above. Under no circumstances should harsh cleaning agents containing acidic, caustic, or abrasive components or citrus, bleach or alcohol-based substances be used to clean or allowed to remain on these finishes.

Eco Brass: As a living finish, this has a tumbled surface which reduces the gleam on the surface. Over time this finish brass will garner a patina with a unique character. Fittings can be cleaned routinely with mild soap and water which will not alter the patina development. A soft wax such as 'Renaissance Wax' can be used gently over the finish after cleaning to preserve the finish. Under no circumstances should harsh cleaning agents containing acidic, caustic, or abrasive components or citrus, bleach or alcohol-based substances be used to clean or allowed to remain on these finishes.

Charcoal Bronze & English Brass: Achieved by chemically treating the brass with an oxidizing solution, the process is repeated several times. The darkness and colour hue are affected by the brass/copper material composition. A wax is applied to the coloured surface to provide a degree of stabilization and

Arcorp Enterprises PTY LTD

Sydney:
9/6-8 Herbert Street, St
Leonards NSW 2064
Ph: 02 9413 3533

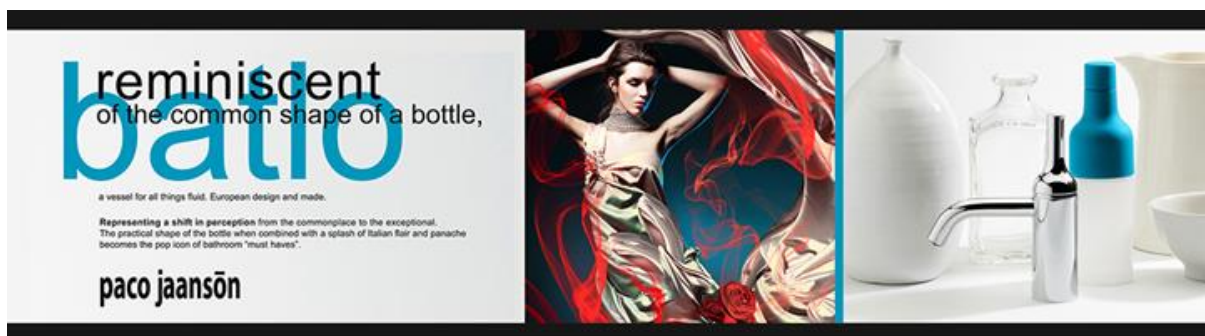
www.paccojaanson.com.au

Melbourne:
360 Boundary Road,
Dingley VIC 3172
Ph: 03 9551 8452

protection. This finish will further evolve over time altering the visual appearance. The degree of change is dependent on many factors such as perspiration, cleaning agents, wear and abrasion. Being a softer finish, the durability of the finish is directly related to its environment and the care and maintenance of the article, which are as per the guidelines as set out above. A soft wax such as 'Renaissance Wax' can be used gently over the finish after cleaning to preserve the finish. Under no circumstances should harsh cleaning agents containing acidic, caustic, or abrasive components or citrus, bleach or alcohol-based substances be used to clean or allowed to remain on these finishes.

Copper, Flemish Copper & Ultra: These are lacquered finishes which have an acrylic lacquer topcoat applied to provide additional protection given that these finishes are soft with low corrosion resistance. Simply wiping and drying with a soft cloth will maintain the finish. Never use abrasives of any nature as these will scratch and wear the coating. Follow guidelines as set out above.

Powder coat & Brown Bronze Finishes: Cleaning and care as per guidelines above. Please note that these finishes are delicate and if chipped or scratched this will damage the finish and will not be covered by the warranty. Avoid contact with ultraviolet light and under no circumstances should harsh cleaning agents containing acidic, caustic, or abrasive components or citrus, bleach or alcohol-based substances be used to clean or allowed to remain on these finishes.



Arcorp Enterprises PTY LTD

Sydney:
9/6-8 Herbert Street, St
Leonards NSW 2064
Ph: 02 9413 3533

www.paccojaanson.com.au

Melbourne:
360 Boundary Road,
Dingley VIC 3172
Ph: 03 9551 8452